



## Key Indicator 4.1 - **Physical facilities**

**METRIC NO.:-** 4.1.1 Availability of adequate infrastructure and physical facilities viz., classrooms, laboratories, ICT facilities, cultural activities, gymnasium, yoga centre etc. in the institution

Sr. No.	Particulars	Page No.
1	Building Plan, List of rooms & building completion certificate	2
2	Geotagged Photos of Classrooms	17
3	Geotagged Photos of ICT enabled facilities	22
4	Geotagged Photos of Laboratories	26

Certified document from page 1 to 45



LOKMANYA TILAK JANKALYAN SHIKSHAN SANSTHA'S  
**PRIYADARSHINI J. L. COLLEGE OF PHARMACY**  
(Formerly known as J. L. Chaturvedi College of Pharmacy)  
Electronics Zone Building, MIDC, Hingna Road, Nagpur-440016 (M.S.) India  
Tel. No.: +91-7104 - 299510  
E-mail: principal@pjlc.edu.in, ilccpnp@gmail.com • Website: www. pjlc.edu.in  
Accredited with Grade A+ by NAAC  
Institute Code: DTE 4265 & RTMNU 265



# BUILDING PLAN



LOKMANYA TILAK JANKALYAN SHIKSHAN SANSTHA'S  
**PRIYADARSHINI J. L. COLLEGE OF PHARMACY**

(Formerly known as J. L. Chaturvedi College of Pharmacy)

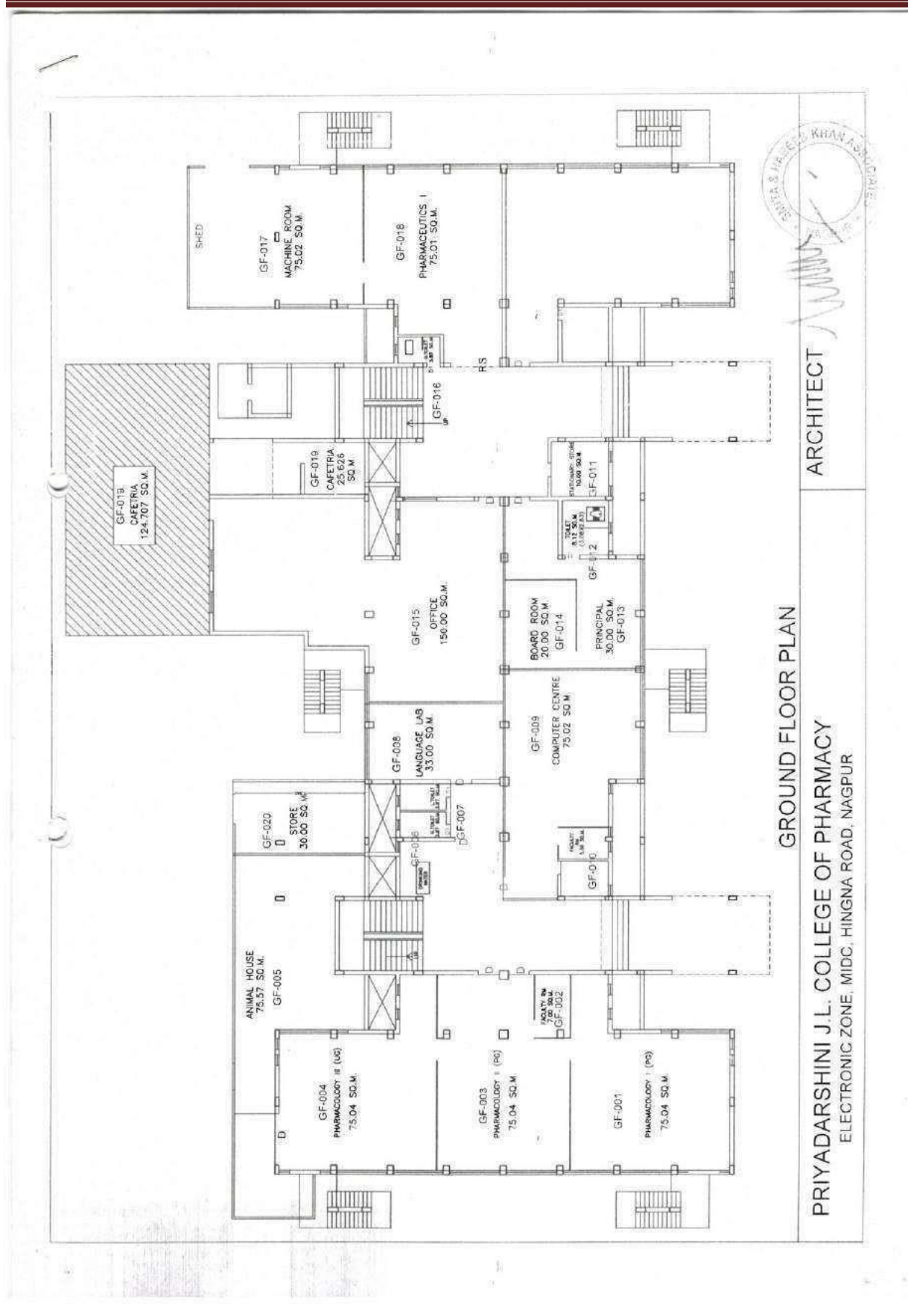
Electronics Zone Building, MIDC, Hingna Road, Nagpur-440016 (M.S.) India

Tel. No.: +91-7104 - 299510

E-mail: principal@pjcp.edu.in, ilccnpgp@gmail.com • Website: www. pjcp.edu.in

Accredited with Grade A+ by NAAC

Institute Code: DTE 4265 & RTMNU 265





LOKMANYA TILAK JANKALYAN SHIKSHAN SANSTHA'S  
**PRIYADARSHINI J. L. COLLEGE OF PHARMACY**

(Formerly known as J. L. Chaturvedi College of Pharmacy)

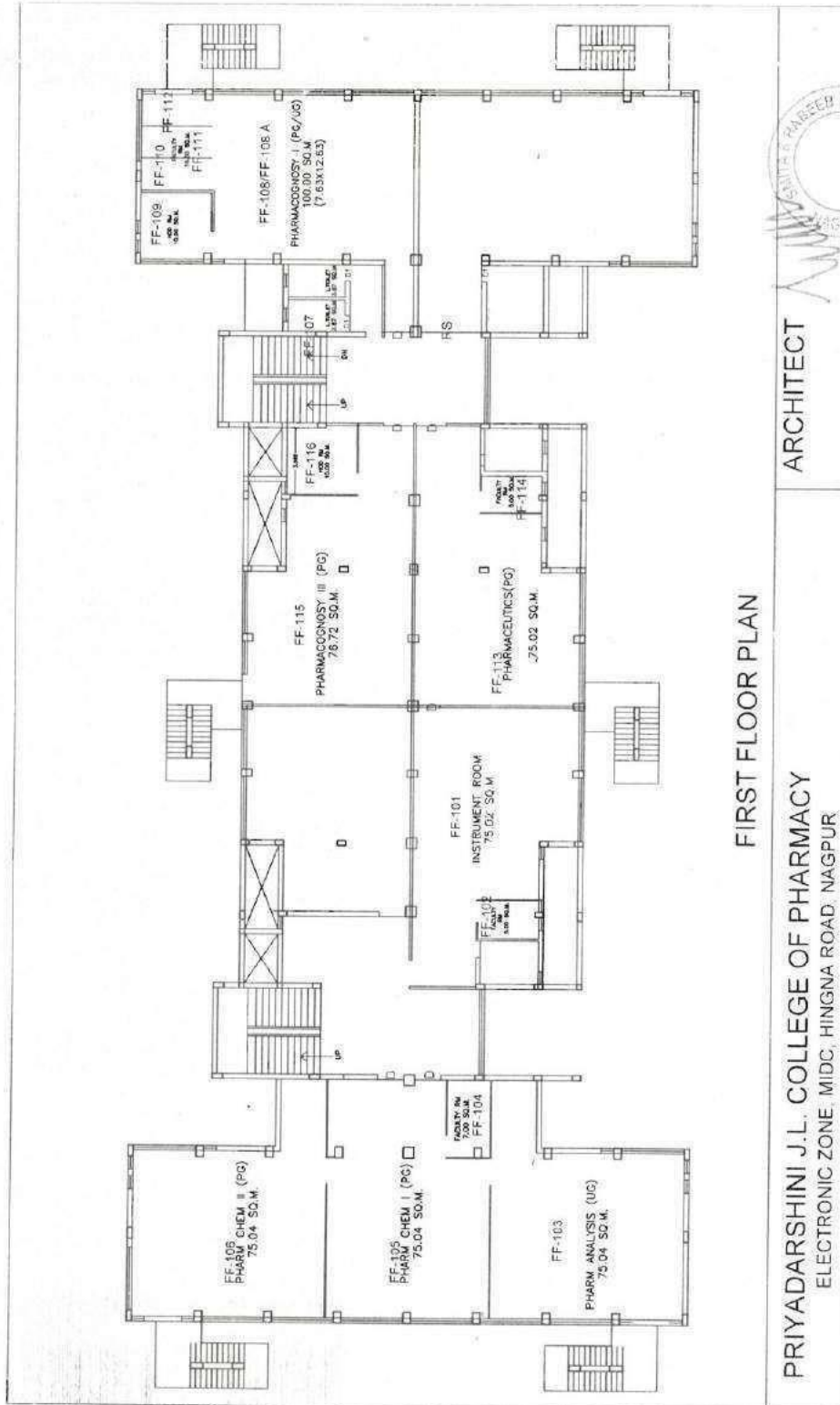
Electronics Zone Building, MIDC, Hingna Road, Nagpur-440016 (M.S.) India

Tel. No.: +91-7104 - 299510

E-mail: principal@pjlc.edu.in, ilccpnpg@gmail.com • Website: www. pjlc.edu.in

Accredited with Grade A+ by NAAC

Institute Code: DTE 4265 & RTMNU 265





LOKMANYA TILAK JANKALYAN SHIKSHAN SANSTHA'S  
**PRIYADARSHINI J. L. COLLEGE OF PHARMACY**

(Formerly known as J. L. Chaturvedi College of Pharmacy)

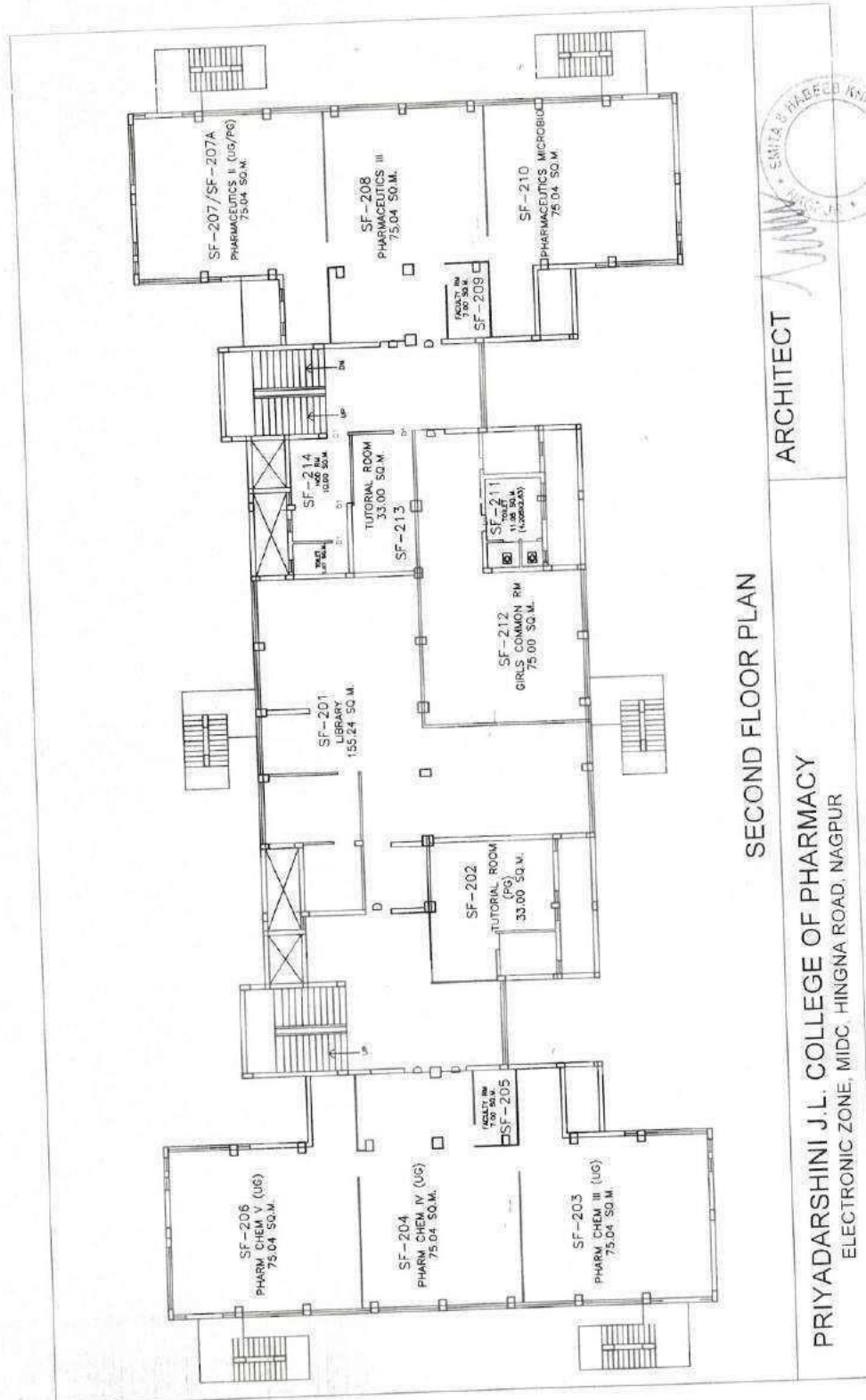
Electronics Zone Building, MIDC, Hingna Road, Nagpur-440016 (M.S.) India

Tel. No.: +91-7104 - 299510

E-mail: principal@pjlc.edu.in, ilccpnpg@gmail.com • Website: www. pjlc.edu.in

Accredited with Grade A+ by NAAC

Institute Code: DTE 4265 & RTMNU 265







LOKMANYA TILAK JANKALYAN SHIKSHAN SANSTHA'S  
**PRIYADARSHINI J. L. COLLEGE OF PHARMACY**

(Formerly known as J. L. Chaturvedi College of Pharmacy)

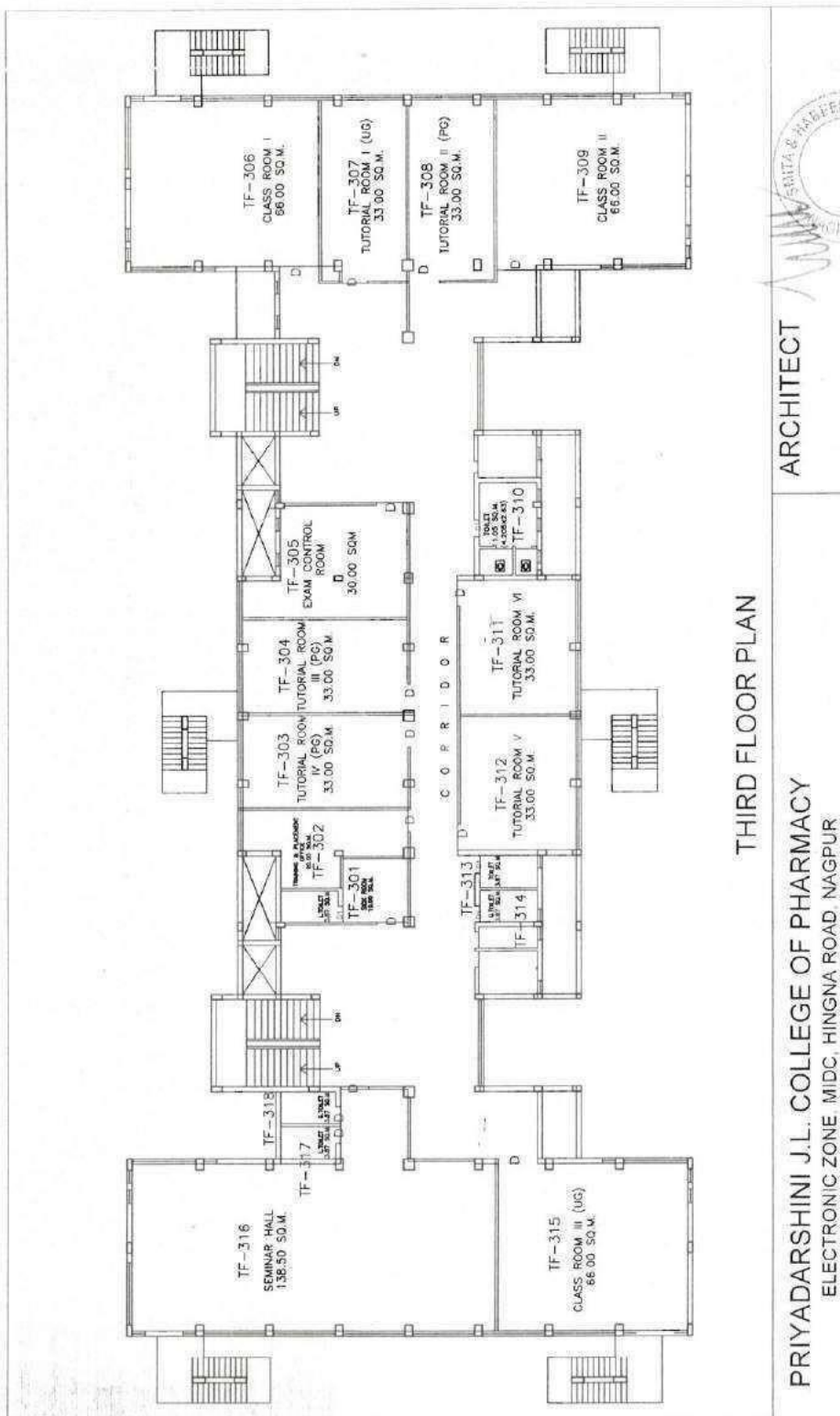
Electronics Zone Building, MIDC, Hingna Road, Nagpur-440016 (M.S.) India

Tel. No.: +91-7104 - 299510

E-mail: principal@pjlc.edu.in, ilccpnpg@gmail.com • Website: www. pjlc.edu.in

Accredited with Grade A+ by NAAC

Institute Code: DTE 4265 & RTMNU 265



THIRD FLOOR PLAN

ARCHITECT

PRIYADARSHINI J.L. COLLEGE OF PHARMACY  
ELECTRONIC ZONE MIDC, HINGNA ROAD, NAGPUR



LOKMANYA TILAK JANKALYAN SHIKSHAN SANSTHA'S  
**PRIYADARSHINI J. L. COLLEGE OF PHARMACY**

(Formerly known as J. L. Chaturvedi College of Pharmacy)

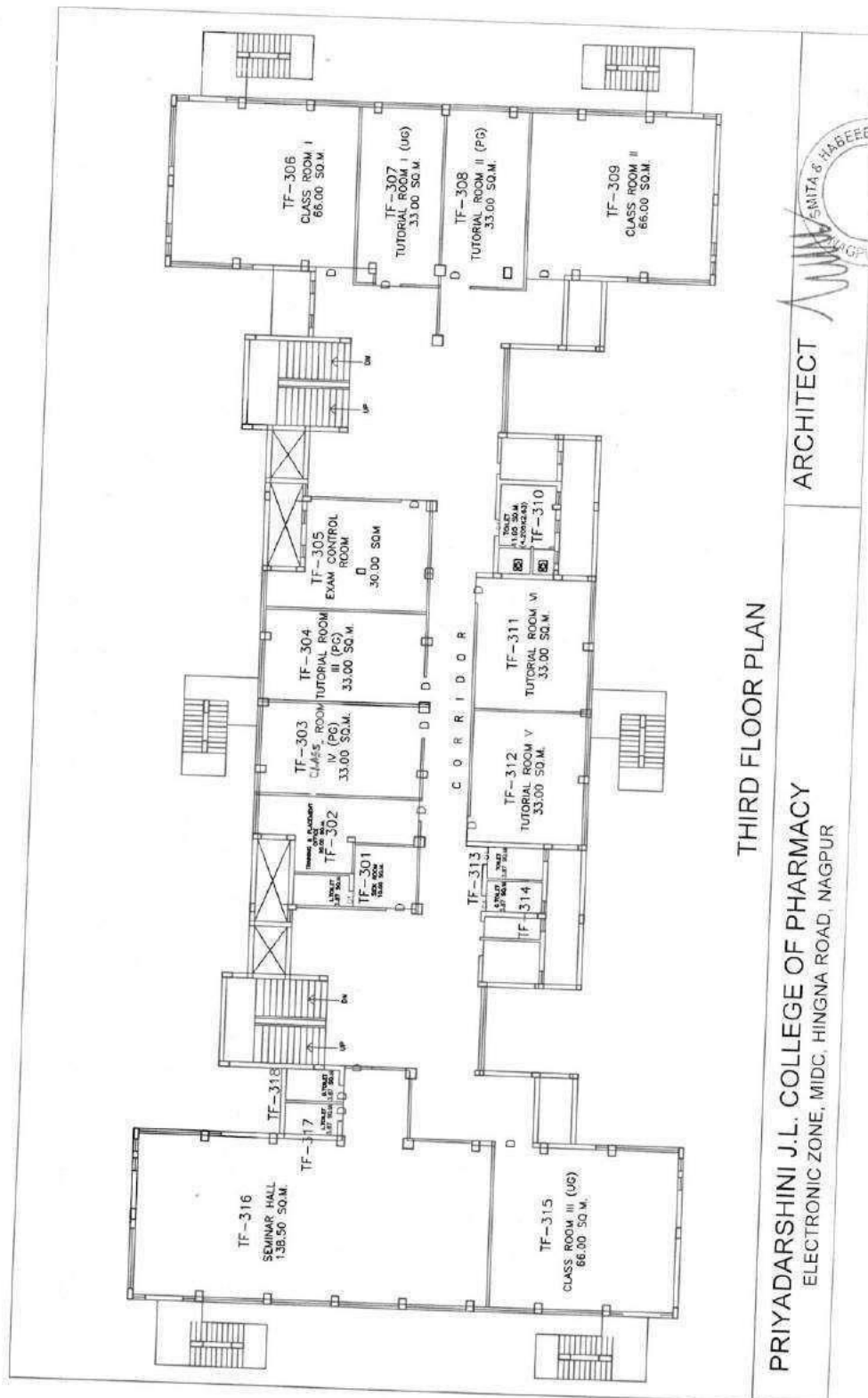
Electronics Zone Building, MIDC, Hingna Road, Nagpur-440016 (M.S.) India

Tel. No.: +91-7104 - 299510

E-mail: principal@pjlc.edu.in, ilccnpg@gmail.com • Website: www. pjlc.edu.in

Accredited with Grade A+ by NAAC

Institute Code: DTE 4265 & RTMNU 265



THIRD FLOOR PLAN

PRIYADARSHINI J.L. COLLEGE OF PHARMACY  
ELECTRONIC ZONE, MIDC, HINGNA ROAD, NAGPUR



ARCHITECT



LOKMANYA TILAK JANKALYAN SHIKSHAN SANSTHA'S  
**PRIYADARSHINI J. L. COLLEGE OF PHARMACY**

(Formerly known as J. L. Chaturvedi College of Pharmacy)

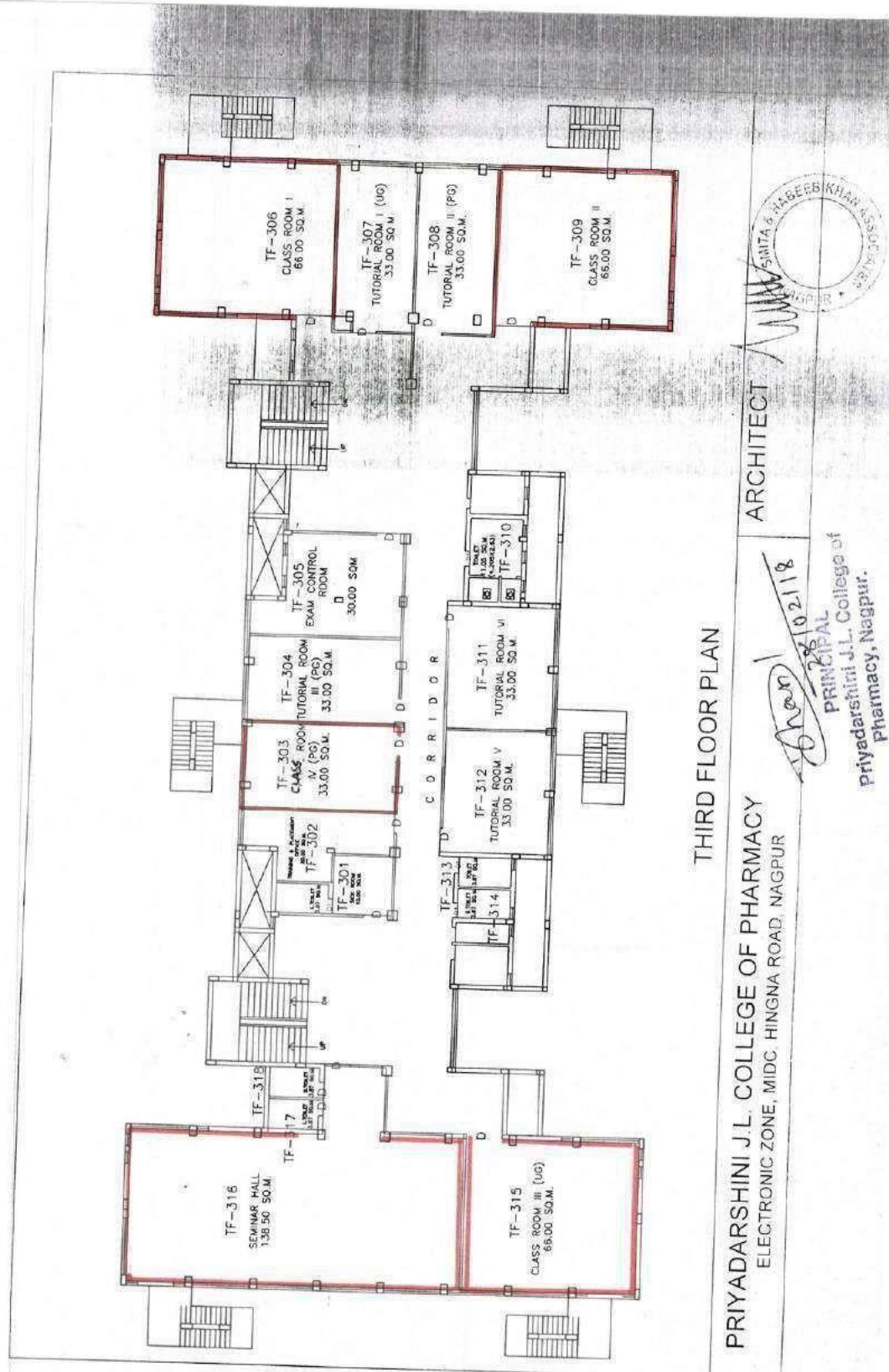
Electronics Zone Building, MIDC, Hingna Road, Nagpur-440016 (M.S.) India

Tel. No.: +91-7104 - 299510

E-mail: principal@pjlc.edu.in, ilccpnpg@gmail.com • Website: www. pjlc.edu.in

Accredited with Grade A+ by NAAC

Institute Code: DTE 4265 & RTMNU 265



THIRD FLOOR PLAN

PRIYADARSHINI J.L. COLLEGE OF PHARMACY  
ELECTRONIC ZONE, MIDC, HINGNA ROAD, NAGPUR

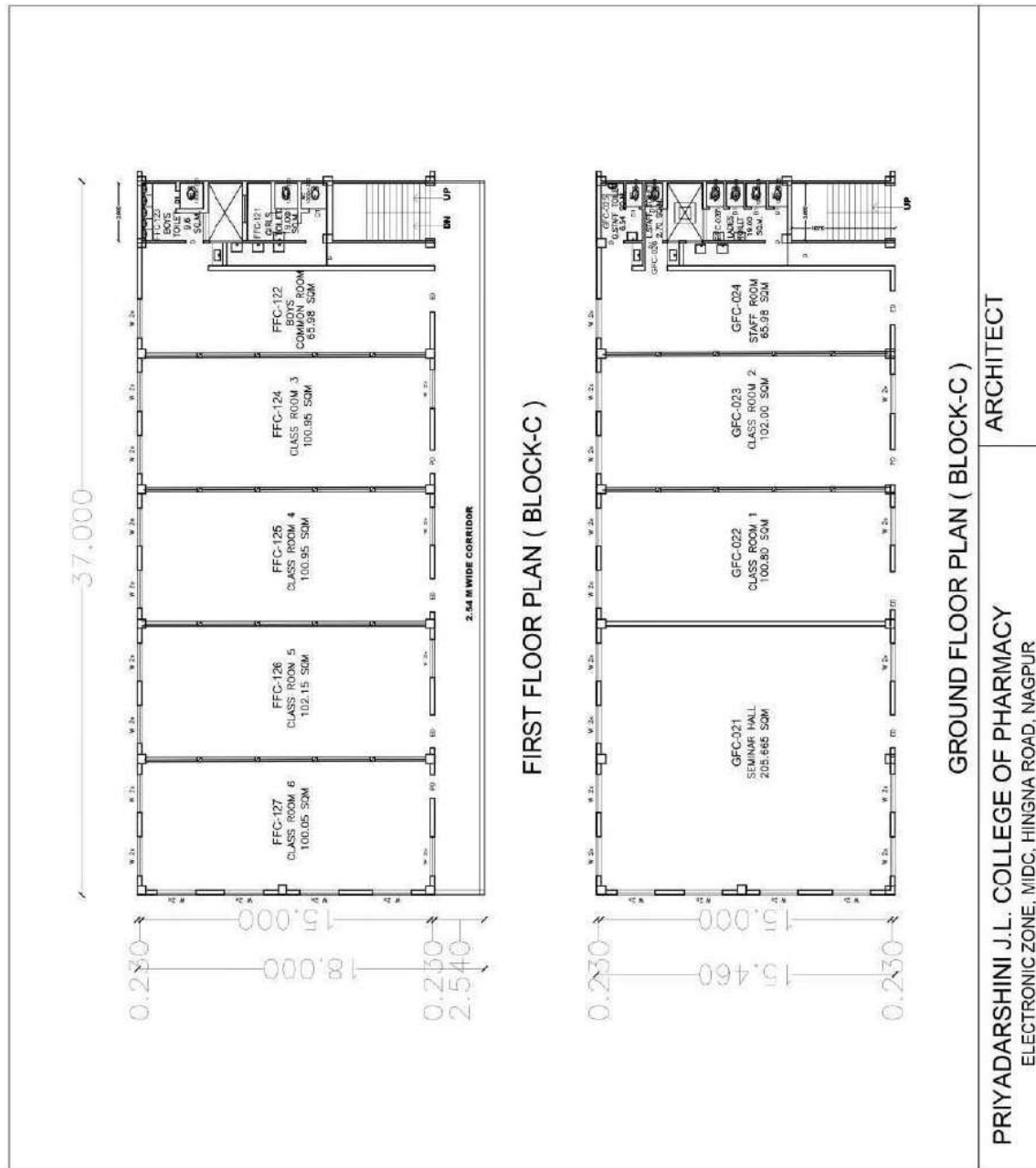
ARCHITECT

28/10/2118

PRINCIPAL  
Priyadarshini J.L. College of  
Pharmacy, Nagpur.









# LIST OF ROOMS



LOKMANYA TILAK JANKALYAN SHIKSHAN SANSTHA'S  
**PRIYADARSHINI J. L. COLLEGE OF PHARMACY**

(Formerly known as J. L. Chaturvedi College of Pharmacy)

Electronics Zone Building, MIDC, Hingna Road, Nagpur-440016 (M.S.) India

Tel. No.: +91-7104 - 299510

E-mail: principal@pjlc.edu.in, ilccpnp@gmail.com • Website: www. pjlc.edu.in

Accredited with Grade B++ by NAAC

Institute Code: DTE 4265 & RTMNU 265



PRIYADARSHINI J. L. COLLEGE OF PHARMACY  
ELECTRONIC ZONE, MIDC, HINGNA ROAD, NAGPUR-16

SR. NO.	ROOM NO.	ROOM TYPE (MENTION CLASS ROOM, LAB, TOILET ETC.)	CARPET AREA (SQ M)
1	GF- 001	Pharmacology Lab I (PG)	75.04
2	GF- 002	Faculty Room	7.00
3	GF- 003	Pharmacology Lab II (PG)	75.04
4	GF- 004	Pharmacology Lab III (UG)	75.04
5	GF- 005	Animal House	75.57
6	GF- 006	Gents Toilet	3.87
7	GF- 007	Toilet for Physically Handicapped	3.87
8	GF- 008	Language Lab	75.02
9	GF- 009	Computer Lab	75.02
10	GF- 010	First Aid and Sick Room	5.00
11	GF- 011	Stationery Store	10.00
12	GF- 012	Toilet for staff	8.12
13	GF- 013	Principal's Cabin	30.00
14	GF- 014	Board Room	20.00
15	GF- 015	Office	150.00
16	GF- 016	Toilet for Staff	3.87
17	GF- 017	Machine Room	75.02
18	GF- 018	Pantry	10.00
19	GF- 019	Pharmaceutics Lab I	75.01
20	GF- 020	Cafeteria	150.33
21	GF- 021	Central Store	30.00
22	GF-022	Security and Generator Room	30.00
23	FF-101	Instrument Room	75.02
24	FF-102	Faculty Room	5.00
25	FF-103	Pharmaceutical Analysis Lab (UG)	75.05
26	FF-104	Faculty Room	7.00
27	FF-105	Pharmaceutical Chemistry Lab I (PG)	75.04
28	FF-106	Pharmaceutical Chemistry Lab II (PG)	75.04
29	FF-107	Ladies Toilet	7.74
30	FF-108	Pharmacognosy Lab I (UG/ PG)	100.00
31	FF-109	Faculty Room	10.00
32	FF-110	Faculty Room	5.00
33	FF-111	Faculty Room	5.00
34	FF-112	Pharmaceutics (PG)	75.02
35	FF-113	Faculty Room	5.00
36	FF-114	Pharmacognosy Lab III (UG/ PG)	76.72
37	FF-115	HOD Room	10.00



LOKMANYA TILAK JANKALYAN SHIKSHAN SANSTHA'S  
**PRIYADARSHINI J. L. COLLEGE OF PHARMACY**

(Formerly known as J. L. Chaturvedi College of Pharmacy)

Electronics Zone Building, MIDC, Hingna Road, Nagpur-440016 (M.S.) India

Tel. No.: +91-7104 - 299510

E-mail: principal@pjlc.edu.in, ilccpnpg@gmail.com • Website: www. pjlc.edu.in

Accredited with Grade B++ by NAAC

Institute Code: DTE 4265 & RTMNU 265



PRIYADARSHINI J. L. COLLEGE OF PHARMACY			
ELECTRONIC ZONE, MIDC, HINGNA ROAD, NAGPUR-16			

SR. NO.	ROOM NO.	ROOM TYPE (MENTION CLASS ROOM, LAB, TOILET ETC.)	CARPET AREA (SQ M)
38	SF- 201	Library	155.24
39	SF- 202	Faculty Room	10.00
40	SF- 203	Pharmaceutical Chemistry Lab III (UG)	75.04
41	SF- 204	Pharmaceutical Chemistry Lab IV (UG)	75.04
42	SF- 205	Faculty Room	7.00
43	SF- 206	Pharmaceutical Chemistry Lab V (UG)	75.04
44	SF- 207	Pharmaceutics Lab II (UG/ PG)	75.04
45	SF- 208	Class Room VI (PG)	33.00
46	SF- 209	Faculty Room	7.00
47	SF- 210	Pharmaceutics Microbiology Lab	75.04
48	SF- 211	Ladies Toilet	11.05
49	SF- 212	Girls' Common Room	75.00
50	SF- 213	Aseptic Area	33.00
51	SF- 214	HOD Room	10.00
52	TF-301	Training And Placement Office	30.00
53	TF-302	Class Room IV (PG)	33.00
54	TF-303	Gymnasium	33.00
55	TF-304	Examination Control Room	30.00
56	TF-305	Class Room I	66.00
57	TF-306	Tutorial Room (UG)	66.00
58	TF-307	Class Room II	66.00
59	TF-308	Gents Toilet	11.05
60	TF-309	Class Room III (PG)	33.00
61	TF-310	Boys' Common Room	33.00
62	TF-311	Gents Toilet	3.87
63	TF-312	Ladies Toilet	3.87
64	TF-313	Class Room V	66.00
65	TF-314	Seminar Hall	138.50
66	TF-315	Ladies Toilet	3.87
67	TF-316	Gents Toilet	3.87





LOKMANYA TILAK JANKALYAN SHIKSHAN SANSTHA'S  
**PRIYADARSHINI J. L. COLLEGE OF PHARMACY**

(Formerly known as J. L. Chaturvedi College of Pharmacy)

Electronics Zone Building, MIDC, Hingna Road, Nagpur-440016 (M.S.) India

Tel. No.: +91-7104 - 299510

E-mail: principal@pjlc.edu.in, ilccpnp@gmail.com • Website: www. pjlc.edu.in

Accredited with Grade B++ by NAAC

Institute Code: DTE 4265 & RTMNU 265



PRIYADARSHINI J. L. COLLEGE OF PHARMACY			
ELECTRONIC ZONE, MIDC, HINGNA ROAD, NAGPUR-16			

SR. NO.	ROOM NO.	ROOM TYPE (MENTION CLASS ROOM, LAB, TOILET ETC.)	CARPET AREA (SQ M)
38	SF- 201	Library	155.24
39	SF- 202	Faculty Room	10.00
40	SF- 203	Pharmaceutical Chemistry Lab III (UG)	75.04
41	SF- 204	Pharmaceutical Chemistry Lab IV (UG)	75.04
42	SF- 205	Faculty Room	7.00
43	SF- 206	Pharmaceutical Chemistry Lab V (UG)	75.04
44	SF- 207	Pharmaceutics Lab II (UG/ PG)	75.04
45	SF- 208	Class Room VI (PG)	33.00
46	SF- 209	Faculty Room	7.00
47	SF- 210	Pharmaceutics Microbiology Lab	75.04
48	SF- 211	Ladies Toilet	11.05
49	SF- 212	Girls' Common Room	75.00
50	SF- 213	Aseptic Area	33.00
51	SF- 214	HOD Room	10.00
52	TF-301	Training And Placement Office	30.00
53	TF-302	Class Room IV (PG)	33.00
54	TF-303	Gymnasium	33.00
55	TF-304	Examination Control Room	30.00
56	TF-305	Class Room I	66.00
57	TF-306	Tutorial Room (UG)	66.00
58	TF-307	Class Room II	66.00
59	TF-308	Gents Toilet	11.05
60	TF-309	Class Room III (PG)	33.00
61	TF-310	Boys' Common Room	33.00
62	TF-311	Gents Toilet	3.87
63	TF-312	Ladies Toilet	3.87
64	TF-313	Class Room V	66.00
65	TF-314	Seminar Hall	138.50
66	TF-315	Ladies Toilet	3.87
67	TF-316	Gents Toilet	3.87



### **List of Rooms- Block C**

Sr. No.	Room No.	Room Type
1	GF-021	Seminar Hall
2	GF-022	Class Room- VI
3	GF-023	Model Pharmacy Lab
4	GF-024	Staff Room
		Toilet for Gents Staff
		Toilet for Ladies Staff
5	FF-121	Boys Common Room
		Toilet for Boys
6	FF-122	Class Room- VII
7	FF-123	Class Room- VIII
8	FF-124	Class Room- IX
9	FF-125	Class Room- X
10	FF-126	Toilet for Boys



# BUILDING COMPLETION CERTIFICATE



**SMITA & HABEEB KHAN ASSOCIATES**  
ARCHITECTURE & INTERIORS

**BUILDING COMPLETION**  
**CERTIFICATE**

This is to certify that as per the sanctioned building plan of **Priyadarshini J. L. College of Pharmacy), Electronic Zone, Hingna Road, Nagpur**, the total carpet area already available is 4941.20 Sq.mt.

The building wise break up of available area is as given below.

Sr.No	Building	Carpet Area in Sq. M
1	Block 'A'	4291.54
2	Shed	649.66
	<b>TOTAL CARPET AREA</b>	<b>4941.20</b>

& it is completed in all respects and the building is fit and ready for occupation.

Architect

  
**HABEEB A. KHAN**

for SHK ASSOCIATES,  
CA/89/12757  
DATE:



37 HILL TOP, AMBAZARI, NAGPUR 440 033, INDIA TEL: 91 712 2226206, 2225345, habeeb@khans.co.in





LOKMANYA TILAK JANKALYAN SHIKSHAN SANSTHA'S  
**PRIYADARSHINI J. L. COLLEGE OF PHARMACY**

(Formerly known as J. L. Chaturvedi College of Pharmacy)

Electronics Zone Building, MIDC, Hingna Road, Nagpur-440016 (M.S.) India

Tel. No.: +91-7104 - 299510

E-mail: principal@pjlc.edu.in, ilccpnpg@gmail.com • Website: www. pjlc.edu.in

Accredited with Grade B++ by NAAC

Institute Code: DTE 4265 & RTMNU 265



**PRIYADARSHINI J. L. COLLEGE OF PHARMACY (DEGREE)**  
ELECTRONIC ZONE, MIDC, HINGNA ROAD, NAGPUR

Sr. NO	Room No	Room Type( Mention Class Room/Lab/Toilet, etc)	Carpet Area (Sqm)	Completion of Flooring	Completion of Wall & Painting	Completion of Electrification & Lighting
1	GF-001	Pharmacology Lab I (PG)	75.04	Completed	Completed	Completed
2	GF-002	Faculty Room	7.00	Completed	Completed	Completed
3	GF-003	Pharmacology Lab II (PG)	75.04	Completed	Completed	Completed
4	GF-004	Pharmacology Lab III (UG)	75.04	Completed	Completed	Completed
5	GF-005	Animal House	75.57	Completed	Completed	Completed
6	GF-006	G Toilet	3.87	Completed	Completed	Completed
7	GF-007	L Toilet	3.87	Completed	Completed	Completed
8	GF-008	Language Lab	33.00	Completed	Completed	Completed
9	GF-009	Computer Center	75.02	Completed	Completed	Completed
10	GF-010	Faculty Room	5.00	Completed	Completed	Completed
11	GF-011	Stationary Store	10.00	Completed	Completed	Completed
12	GF-012	Toilet	8.12	Completed	Completed	Completed
13	GF-013	Principal's Cabin	30.00	Completed	Completed	Completed
14	GF-014	Board Room	20.00	Completed	Completed	Completed
15	GF-015	Office	150.00	Completed	Completed	Completed
16	GF-016	G Toilet	3.87	Completed	Completed	Completed
17	GF-017	Machine Room	75.02	Completed	Completed	Completed
18	GF-018	Pharmaceutics I	75.01	Completed	Completed	Completed
19	GF-019	Cafeteria	150.33	Completed	Completed	Completed
20	GF-020	Store	30.00	Completed	Completed	Completed
21	OC-1	Passage	70.37	Completed	Completed	Completed
22	OC-2	Staircase	19.09	Completed	Completed	Completed
24	OC-3	Staircase	12.66	Completed	Completed	Completed
25	OC-4	Staircase	12.66	Completed	Completed	Completed
26	OC-5	Staircase	12.66	Completed	Completed	Completed
27	OC-6	Staircase	12.66	Completed	Completed	Completed
28	OC-7	Staircase	12.66	Completed	Completed	Completed
29	OC-8	Passage	68.00	Completed	Completed	Completed
30	OC-9	Staircase	19.09	Completed	Completed	Completed
31	OC-10	Staircase	12.66	Completed	Completed	Completed
32	FF-101	Instrument Room	75.02	Completed	Completed	Completed
33	FF-102	Faculty Room	5.00	Completed	Completed	Completed
34	FF-103	Pharm Analysis Lab (UG)	75.05	Completed	Completed	Completed
35	FF-104	Faculty Room	7.00	Completed	Completed	Completed
36	FF-105	Pharm Chem Lab I (PG)	75.04	Completed	Completed	Completed
37	FF-106	Pharm Chem Lab II (PG)	75.04	Completed	Completed	Completed
38	FF-107	L Toilet	7.74	Completed	Completed	Completed
39	FF-108, FF-108A	Pharmacognosy Lab I (UG/PG)	100.00	Completed	Completed	Completed
40	FF-109	HOD Room	10.00	Completed	Completed	Completed
41	FF-110	Faculty Room	5.00	Completed	Completed	Completed
42	FF-111	Faculty Room	5.00	Completed	Completed	Completed
43	FF-112	Faculty Room	5.00	Completed	Completed	Completed
44	FF-113	Pharmaceutics (PG)	75.02	Completed	Completed	Completed
45	FF-114	Faculty Room	5.00	Completed	Completed	Completed
46	FF-115	Pharmacognosy Lab III (PG)	76.72	Completed	Completed	Completed
47	FF-116	HOD Room	10.00	Completed	Completed	Completed
48	1C-1	Passage	48.79	Completed	Completed	Completed
49	1C-2	Staircase	19.09	Completed	Completed	Completed
50	1C-3	Staircase	12.66	Completed	Completed	Completed
51	1C-4	Staircase	12.66	Completed	Completed	Completed
52	1C-5	Staircase	12.66	Completed	Completed	Completed
53	1C-6	Staircase	12.66	Completed	Completed	Completed
54	1C-7	Staircase	12.66	Completed	Completed	Completed
55	1C-8	Passage	68.00	Completed	Completed	Completed
56	1C-9	Staircase	19.09	Completed	Completed	Completed
57	1C-10	Staircase	12.66	Completed	Completed	Completed

jlccp\_building\_area\_-16 2 15

1 OF 3

JLCCP(DEGREE) F-3



LOKMANYA TILAK JANKALYAN SHIKSHAN SANSTHA'S  
**PRIYADARSHINI J. L. COLLEGE OF PHARMACY**

(Formerly known as J. L. Chaturvedi College of Pharmacy)

Electronics Zone Building, MIDC, Hingna Road, Nagpur-440016 (M.S.) India

Tel. No.: +91-7104 - 299510

E-mail: principal@pjlc.edu.in, ilccpnpg@gmail.com • Website: www. pjlc.edu.in

Accredited with Grade B++ by NAAC

Institute Code: DTE 4265 & RTMNU 265



Sr. NO	Room No	Room Type( Mention Class Room/Lab/Toilet, etc)	Carpet Area (Sqm)	Completion of Flooring	Completion of Wall & Painting	Completion of Electrification & Lighting
58	SF-201	Library	155.24	Completed	Completed	Completed
59	SF-202	Tutorial Room (PG)	33.00	Completed	Completed	Completed
60	SF-203	Pharm Chem Lab III (UG)	75.04	Completed	Completed	Completed
61	SF-204	Pharm Chem Lab IV (UG)	75.04	Completed	Completed	Completed
62	SF-205	Faculty Room	7.00	Completed	Completed	Completed
63	SF-206	Pharm Chem Lab V (UG)	75.04	Completed	Completed	Completed
64	SF-207	Pharmaceutics Lab II (UG/PG)	75.04	Completed	Completed	Completed
	SF-207 A					
65	SF-208	Pharmaceutics Lab III	75.04	Completed	Completed	Completed
66	SF-209	Faculty Room	7.00	Completed	Completed	Completed
67	SF-210	Pharmaceutics Microbiology Lab II	75.04	Completed	Completed	Completed
68	SF-211	Toilet	11.05	Completed	Completed	Completed
69	SF-212	Girl's Common Room	75.00	Completed	Completed	Completed
70	SF-213	Tutorial Room (PG)	33.00	Completed	Completed	Completed
71	SF-214	HOD Room	10.00	Completed	Completed	Completed
72	2C-1	Passage	37.92	Completed	Completed	Completed
73	2C-2	Staircase	19.09	Completed	Completed	Completed
74	2C-3	Staircase	12.66	Completed	Completed	Completed
75	2C-4	Staircase	12.66	Completed	Completed	Completed
76	2C-5	Staircase	12.66	Completed	Completed	Completed
77	2C-6	Staircase	12.66	Completed	Completed	Completed
78	2C-7	Staircase	12.66	Completed	Completed	Completed
79	2C-8	Passage	14.97	Completed	Completed	Completed
80	2C-9	Staircase	19.09	Completed	Completed	Completed
81	2C-10	Staircase	12.66	Completed	Completed	Completed
82	TF-301	Sick-Room	10.00	Completed	Completed	Completed
83	TF-302	Training and Placement Office	20.00	Completed	Completed	Completed
84	TF-303	Tutorial Room IV (PG)	33.00	Completed	Completed	Completed
85	TF-304	Tutorial Room III (PG)	33.00	Completed	Completed	Completed
86	TF-305	Exam Control Room	30.00	Completed	Completed	Completed
87	TF-306	Class Room I	66.00	Completed	Completed	Completed
88	TF-307	Tutorial Room I (UG)	33.00	Completed	Completed	Completed
89	TF-308	Tutorial Room II (PG)	33.00	Completed	Completed	Completed
90	TF-309	Class Room II	66.00	Completed	Completed	Completed
91	TF-310	Toilet	11.05	Completed	Completed	Completed
92	TF-311	Tutorial Room VI	33.00	Completed	Completed	Completed
93	TF-312	Tutorial Room V	33.00	Completed	Completed	Completed
94	TF-313	G Toilet	3.87	Completed	Completed	Completed
95	TF-314	L Toilet	3.87	Completed	Completed	Completed
96	TF-315	Class Room III (UG)	66.00	Completed	Completed	Completed
97	TF-316	Seminar Hall Room	138.50	Completed	Completed	Completed
98	TF-317	L Toilet	3.87	Completed	Completed	Completed
99	TF-318	G Toilet	3.87	Completed	Completed	Completed
100	3C-1	Passage	218.49	Completed	Completed	Completed
101	3C-2	Staircase	19.09	Completed	Completed	Completed
102	3C-3	Staircase	12.66	Completed	Completed	Completed
103	3C-4	Staircase	12.66	Completed	Completed	Completed
104	3C-5	Staircase	12.66	Completed	Completed	Completed
105	3C-6	Staircase	12.66	Completed	Completed	Completed
106	3C-7	Staircase	12.66	Completed	Completed	Completed
107	3C-8	Staircase	19.09	Completed	Completed	Completed
108	3C-9	Staircase	12.66	Completed	Completed	Completed







LOKMANYA TILAK JANKALYAN SHIKSHAN SANSTHA'S  
**PRIYADARSHINI J. L. COLLEGE OF PHARMACY**

(Formerly known as J. L. Chaturvedi College of Pharmacy)

Electronics Zone Building, MIDC, Hingna Road, Nagpur-440016 (M.S.) India

Tel. No.: +91-7104 - 299510

E-mail: principal@pjlc.edu.in, ilccnpg@gmail.com • Website: www. pjlc.edu.in

Accredited with Grade B++ by NAAC

Institute Code: DTE 4265 & RTMNU 265



Sr. NO	Room No	Room Type( Mention Class Room/Lab/Toilet, etc)	Carpet Area (Sqm)	Completion of Flooring	Completion of Wall & Painting	Completion of Electrification & Lighting
109	TEF 401	Boys Common Room	80.00	Completed	Completed	Completed
110	TEF 402	G.Toilet	19.39	Completed	Completed	Completed
111	TEF 403	Class Room IV (UG)	66.00	Completed	Completed	Completed
112	TEF 404	Housekeeping	12.27	Completed	Completed	Completed
113	TEF 405	Maintenance	10.00	Completed	Completed	Completed
114	TEF 406	Pantry for Staff	17.00	Completed	Completed	Completed
115	TEF 407	Staff Room	75.00	Completed	Completed	Completed
116	TEF 408	L Toilet	3.87	Completed	Completed	Completed
117	TEF 409	G.Toilet	3.87	Completed	Completed	Completed
118	TEF 410	Terrace	561.57	Completed	Completed	Completed
100	3C- 1	Staircase	19.09	Completed	Completed	Completed
101	3C- 2	Staircase	12.66	Completed	Completed	Completed
102	3C- 3	Staircase	12.66	Completed	Completed	Completed
103	3C- 4	Staircase	12.66	Completed	Completed	Completed
104	3C- 5	Staircase	12.66	Completed	Completed	Completed
105	3C- 6	Staircase	12.66	Completed	Completed	Completed
106	3C- 7	Staircase	19.09	Completed	Completed	Completed
107	3C- 8	Staircase	12.66	Completed	Completed	Completed
Total Carpet Area in Sqm			4291.54			
Shed carpet Area Sqm			649.66			
Total carpet Area of main bldg in Sqm			4941.20			
<div style="display: flex; justify-content: space-between; align-items: flex-start;"> <div> <p>Signature of the Architect</p> <p>Name of the Architect</p> <p>Registration No.</p> </div> <div style="text-align: center;">   </div> <div> <p>Seal</p> <p>Place</p> </div> </div>						

ilccn building area 16215



# Photos of Classrooms





LOKMANYA TILAK JANKALYAN SHIKSHAN SANSTHA'S  
**PRIYADARSHINI J. L. COLLEGE OF PHARMACY**

(Formerly known as J. L. Chaturvedi College of Pharmacy)

Electronics Zone Building, MIDC, Hingna Road, Nagpur-440016 (M.S.) India

Tel. No.: +91-7104 - 299510

E-mail: principal@pjlc.edu.in, ilccpnpg@gmail.com • Website: www. pjlc.edu.in

Accredited with Grade B++ by NAAC

Institute Code: DTE 4265 & RTMNU 265



GPS Map Camera



Google

Nagpur, Maharashtra, India

4X4V+F3C, Hingna, Nagpur, Nildoh ct, Maharashtra 440016, India

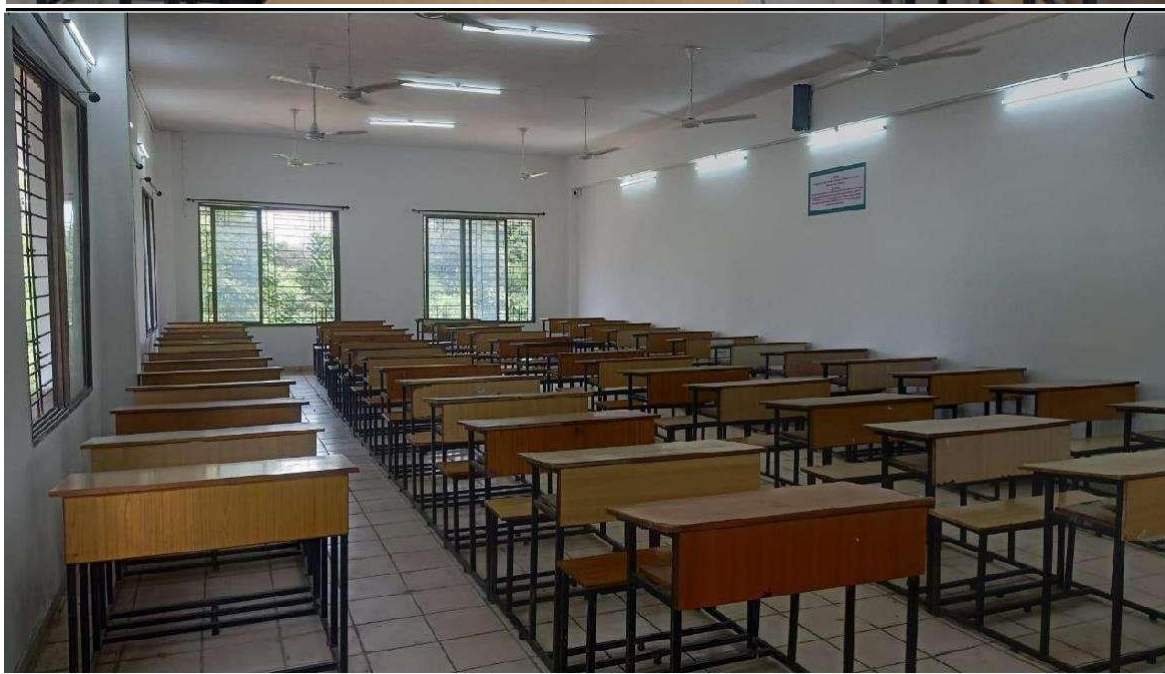
Lat 21.10637°

Long 78.992804°

18/11/24 01:30 PM GMT +05:30



## ICT Enabled Classrooms





LOKMANYA TILAK JANKALYAN SHIKSHAN SANSTHA'S  
**PRIYADARSHINI J. L. COLLEGE OF PHARMACY**

(Formerly known as J. L. Chaturvedi College of Pharmacy)

Electronics Zone Building, MIDC, Hingna Road, Nagpur-440016 (M.S.) India

Tel. No.: +91-7104 - 299510

E-mail: principal@pjlc.edu.in, ilccpngp@gmail.com • Website: www. pjlc.edu.in

Accredited with Grade B++ by NAAC

Institute Code: DTE 4265 & RTMNU 265



## Seminar Hall



Nagpur, Maharashtra, India  
4X4V+F3C, Hingna, Nagpur, Nildoh ct, Maharashtra 440016, India  
Lat 21.106362°  
Long 78.992801°  
18/11/24 01:42 PM GMT +05:30

GPS Map Camera



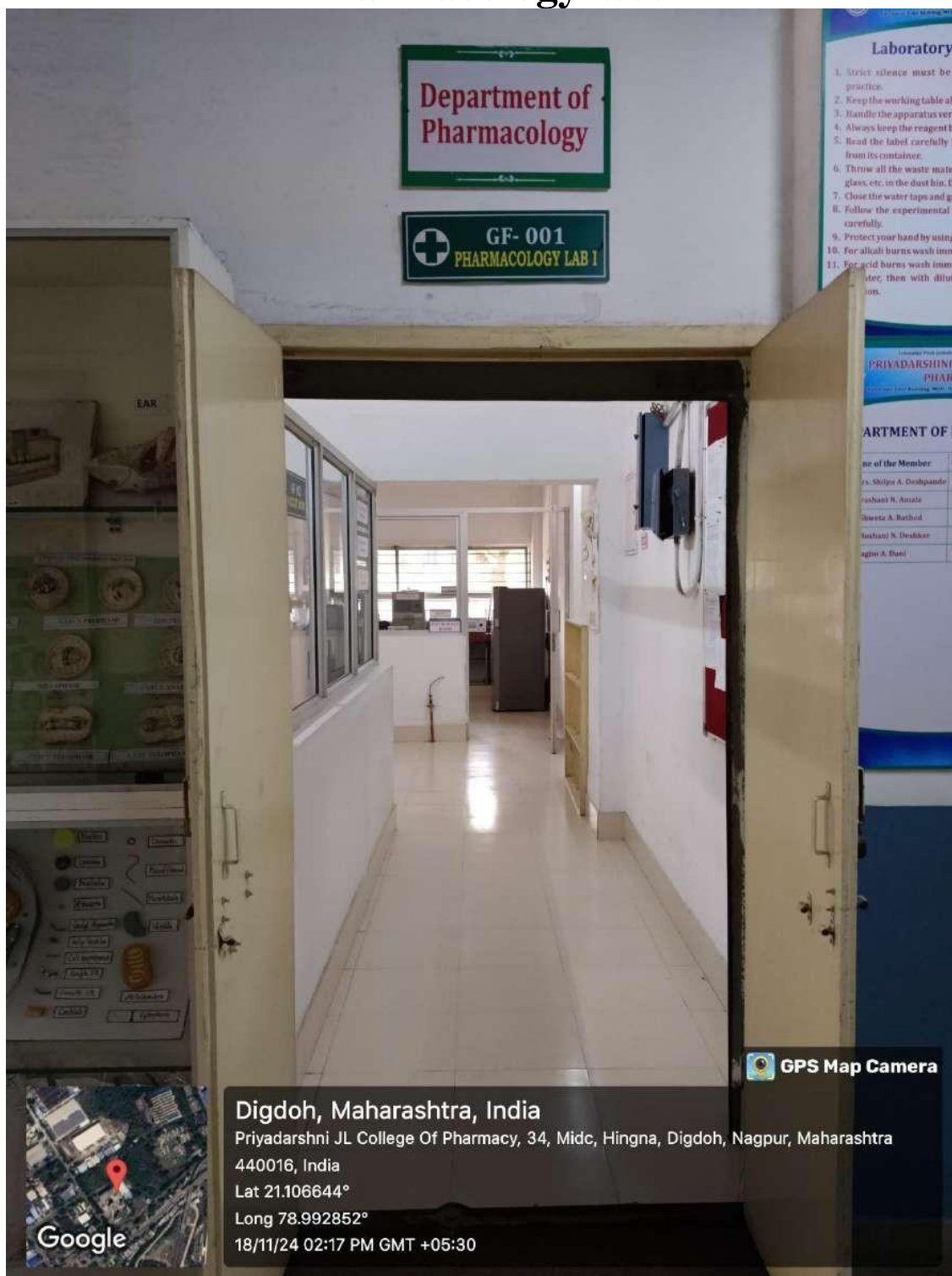


# Laboratories





## Pharmacology labs:





LOKMANYA TILAK JANKALYAN SHIKSHAN SANSTHA'S  
**PRIYADARSHINI J. L. COLLEGE OF PHARMACY**

(Formerly known as J. L. Chaturvedi College of Pharmacy)

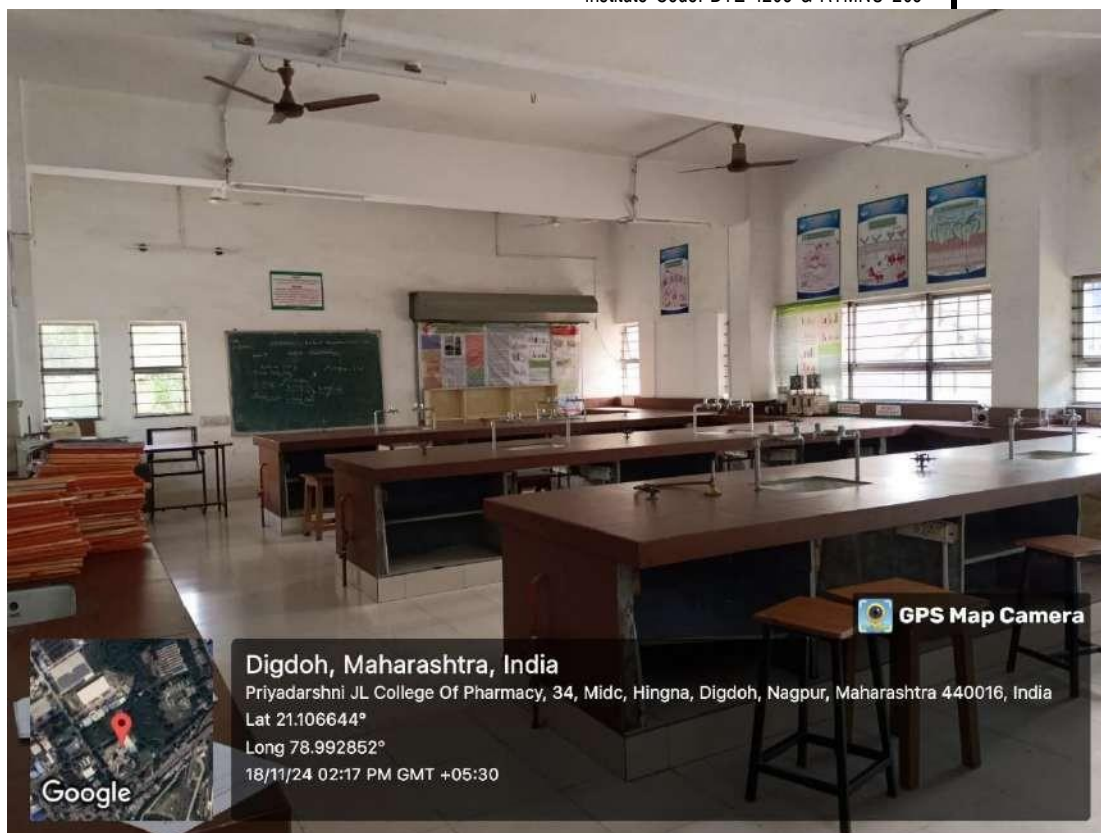
Electronics Zone Building, MIDC, Hingna Road, Nagpur-440016 (M.S.) India

Tel. No.: +91-7104 - 299510

E-mail: principal@pjlc.edu.in, ilccpnpg@gmail.com • Website: www. pjlc.edu.in

Accredited with Grade B++ by NAAC

Institute Code: DTE 4265 & RTMNU 265





LOKMANYA TILAK JANKALYAN SHIKSHAN SANSTHA'S  
**PRIYADARSHINI J. L. COLLEGE OF PHARMACY**

(Formerly known as J. L. Chaturvedi College of Pharmacy)

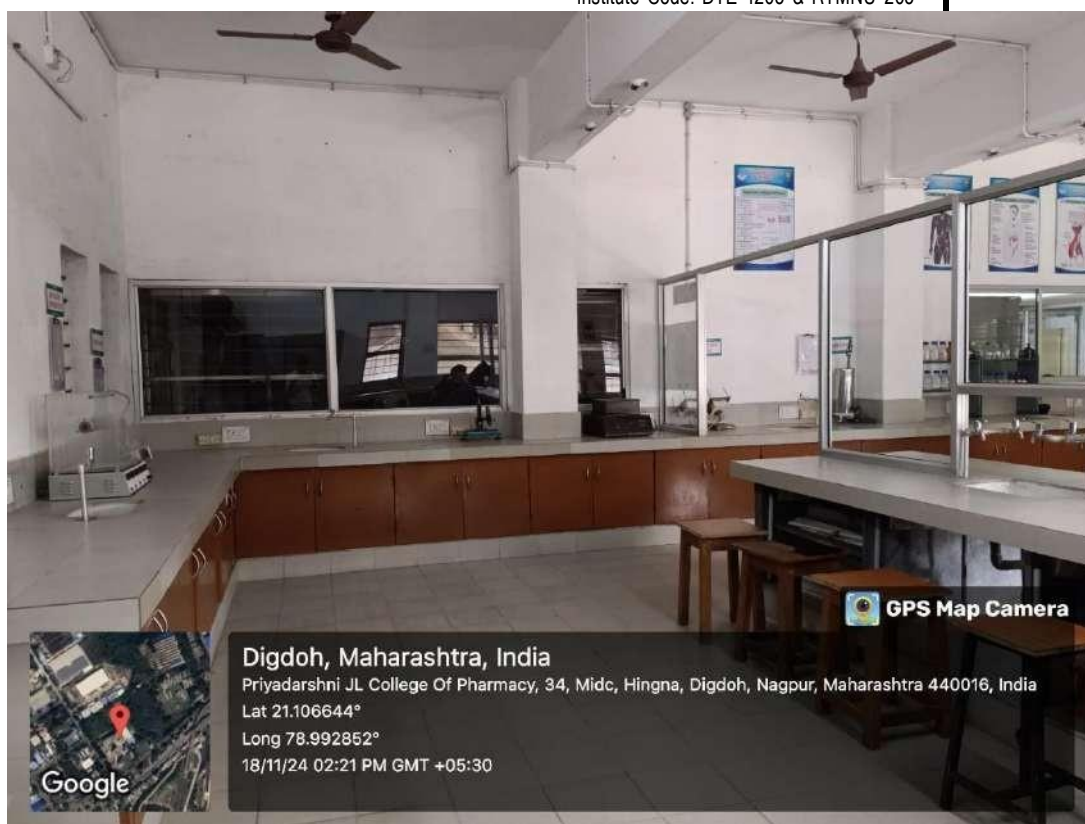
Electronics Zone Building, MIDC, Hingna Road, Nagpur-440016 (M.S.) India

Tel. No.: +91-7104 - 299510

E-mail: principal@pjlc.edu.in, ilccpnp@gmail.com • Website: www. pjlc.edu.in

Accredited with Grade B++ by NAAC

Institute Code: DTE 4265 & RTMNU 265



Digdoh, Maharashtra, India

Priyadarshni JL College Of Pharmacy, 34, Midc, Hingna, Digdoh, Nagpur, Maharashtra 440016, India

Lat 21.106644°

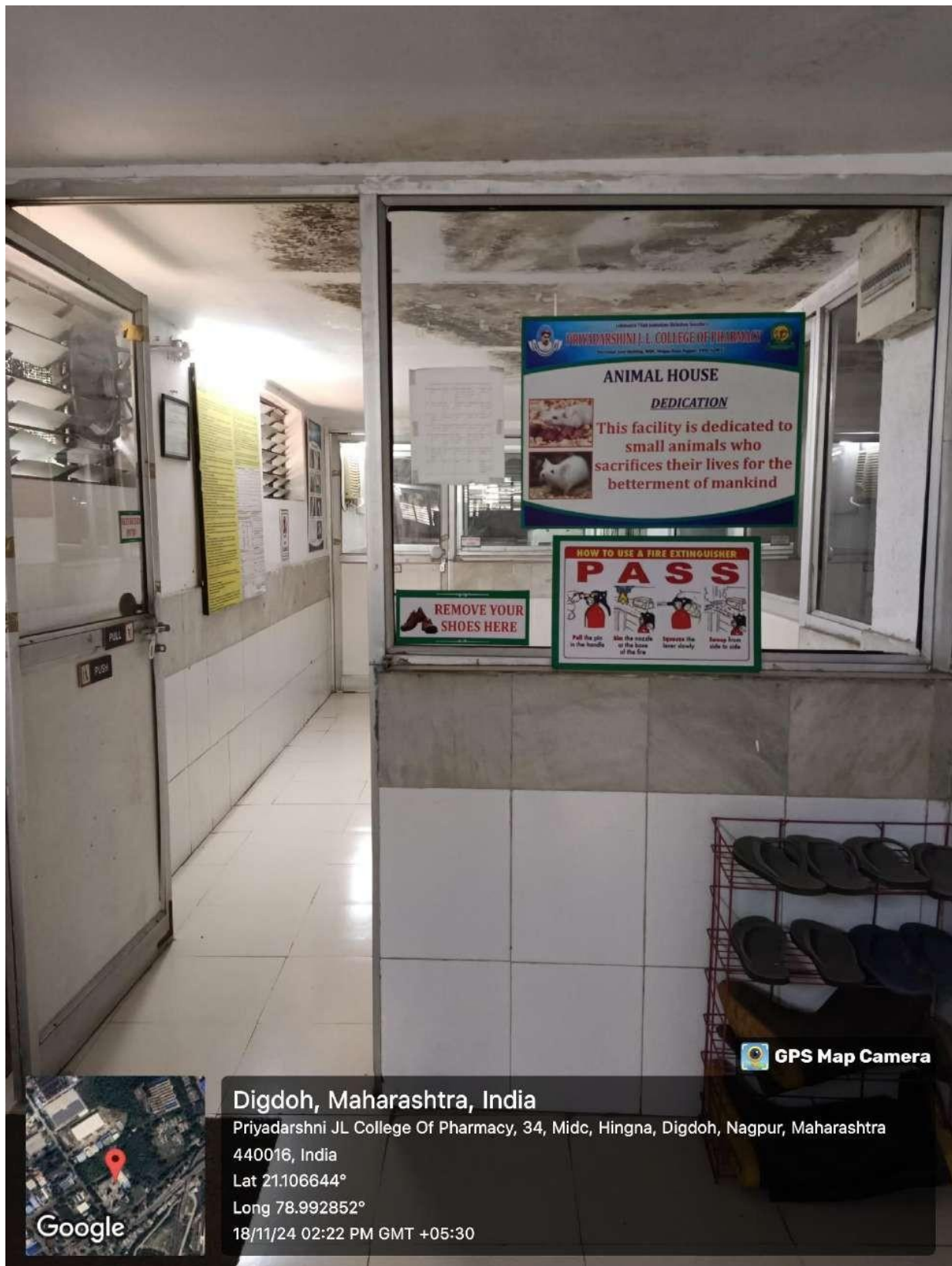
Long 78.992852°

18/11/24 02:21 PM GMT +05:30





## Animal House:





LOKMANYA TILAK JANKALYAN SHIKSHAN SANSTHA'S  
**PRIYADARSHINI J. L. COLLEGE OF PHARMACY**

(Formerly known as J. L. Chaturvedi College of Pharmacy)

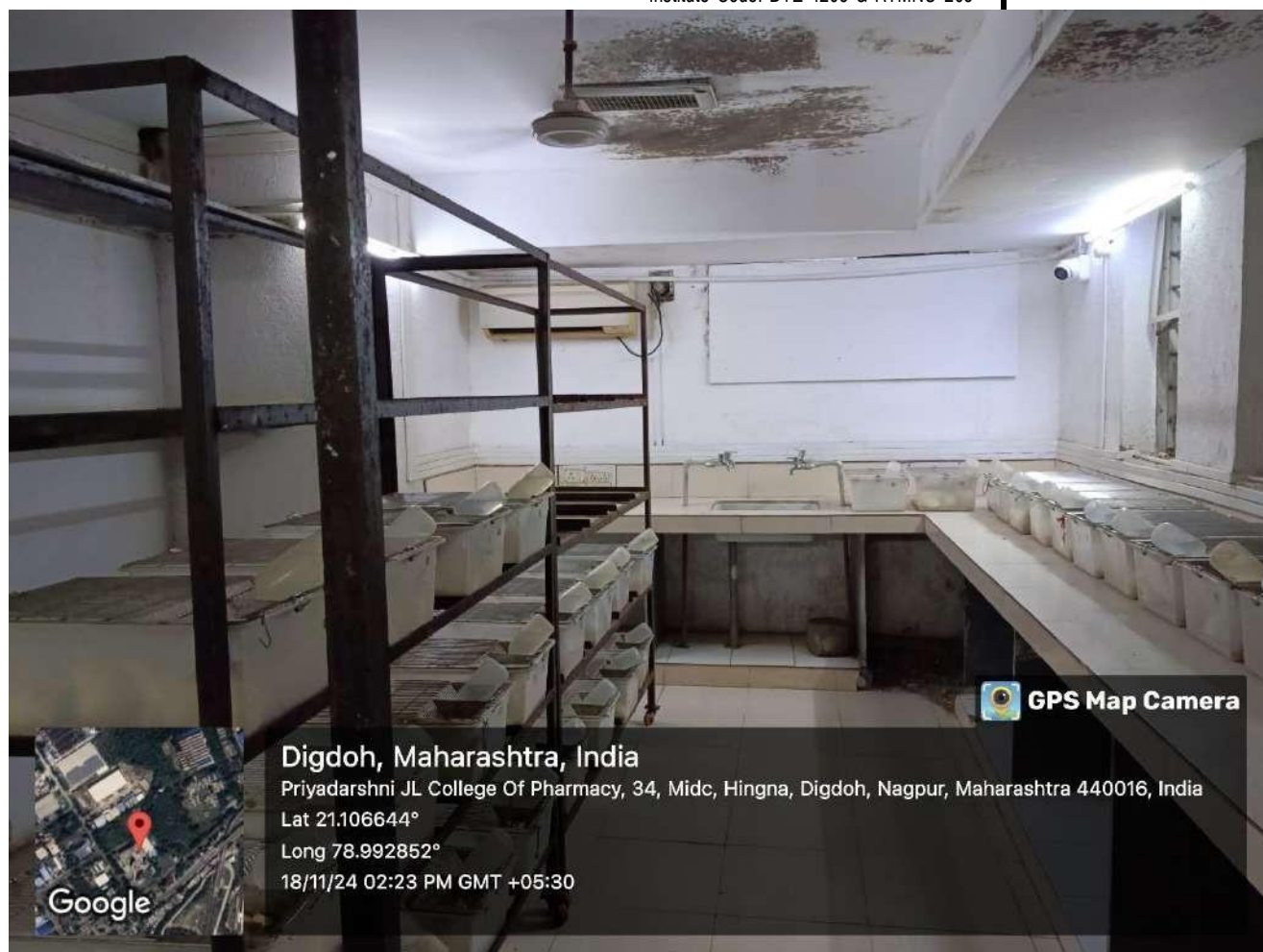
Electronics Zone Building, MIDC, Hingna Road, Nagpur-440016 (M.S.) India

Tel. No.: +91-7104 - 299510

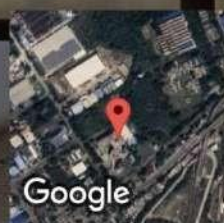
E-mail: principal@pjlc.edu.in, ilccpnp@gmail.com • Website: www. pjlc.edu.in

Accredited with Grade B++ by NAAC

Institute Code: DTE 4265 & RTMNU 265



GPS Map Camera



Digdoh, Maharashtra, India

Priyadarshni JL College Of Pharmacy, 34, Midc, Hingna, Digdoh, Nagpur, Maharashtra 440016, India

Lat 21.106644°

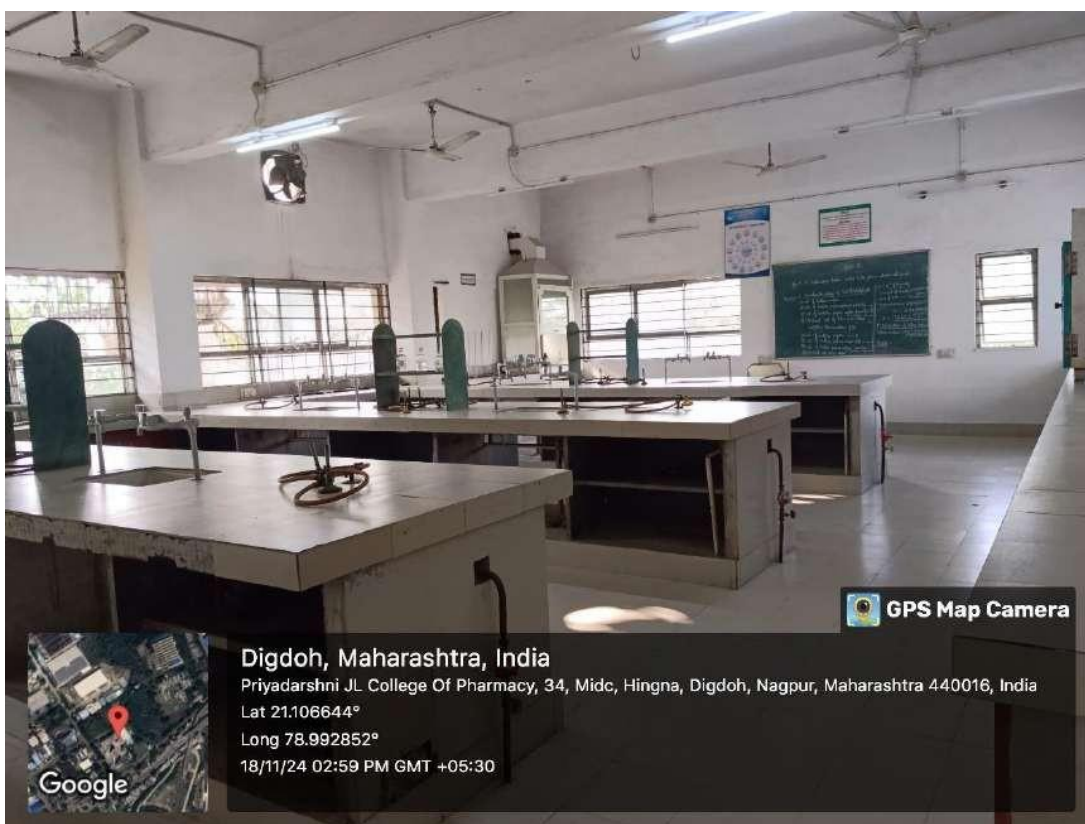
Long 78.992852°

18/11/24 02:23 PM GMT +05:30



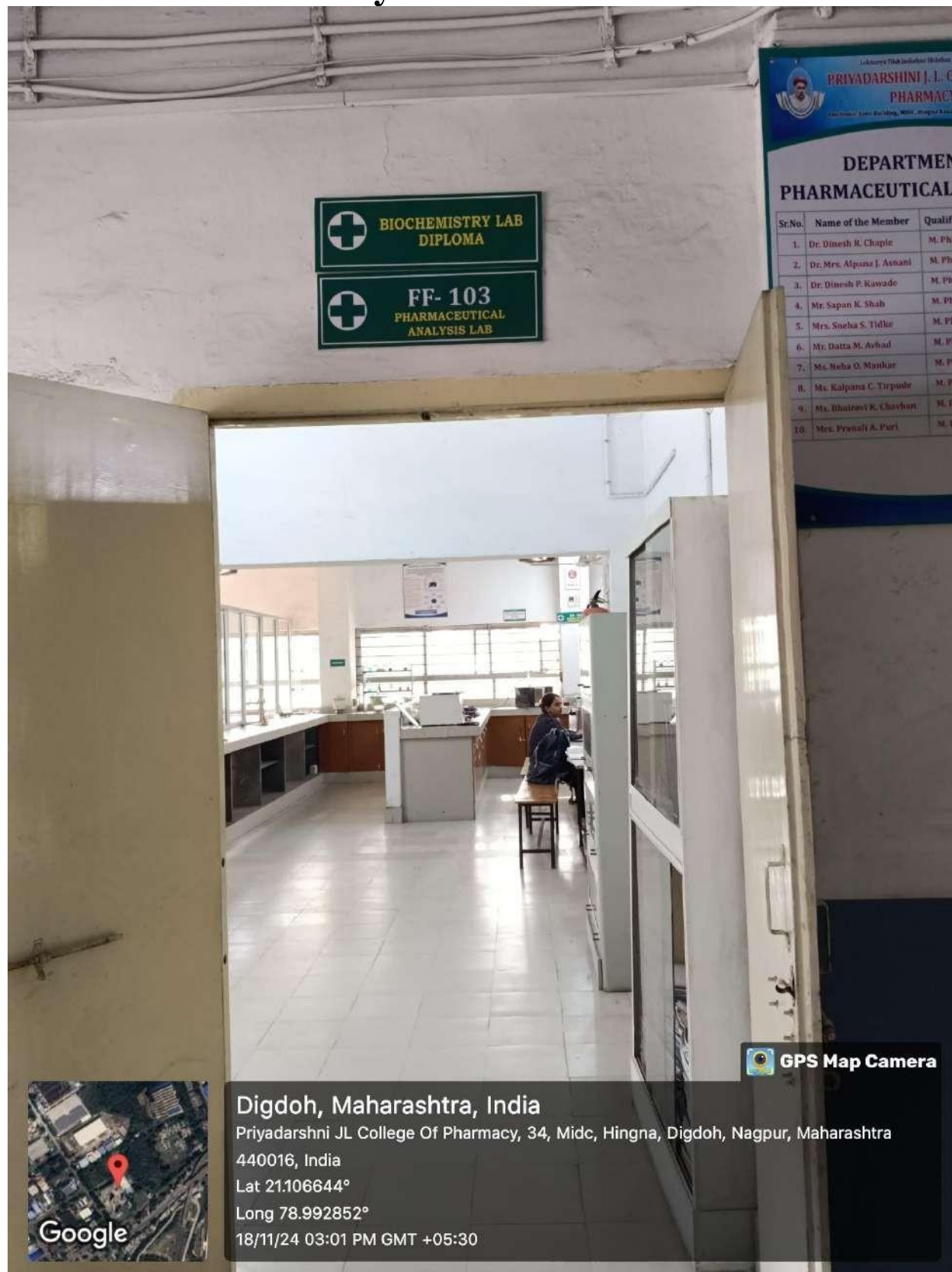


## Pharmaceutical Chemistry Labs:





## Pharmaceutical Analysis Lab:







LOKMANYA TILAK JANKALYAN SHIKSHAN SANSTHA'S  
**PRIYADARSHINI J. L. COLLEGE OF PHARMACY**

(Formerly known as J. L. Chaturvedi College of Pharmacy)

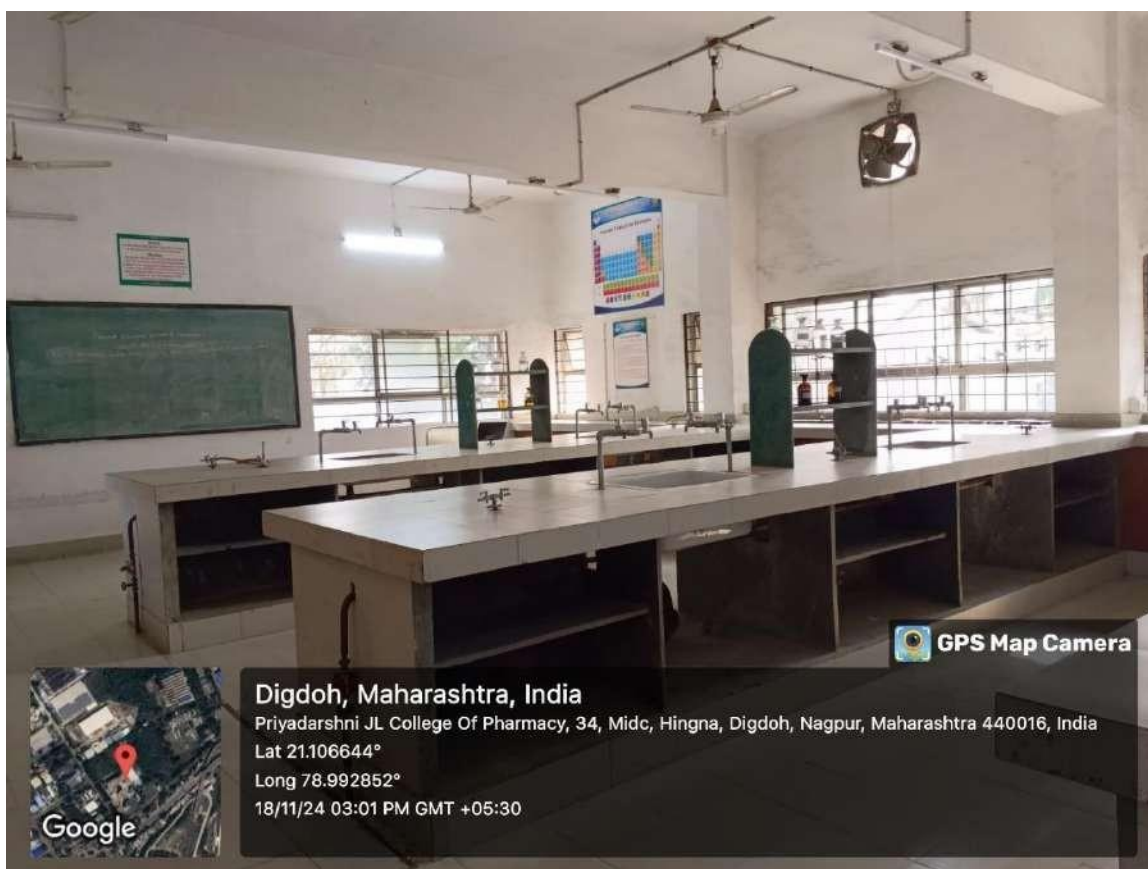
Electronics Zone Building, MIDC, Hingna Road, Nagpur-440016 (M.S.) India

Tel. No.: +91-7104 - 299510

E-mail: principal@pjcp.edu.in, ilccpnp@gmail.com • Website: www. pjcp.edu.in

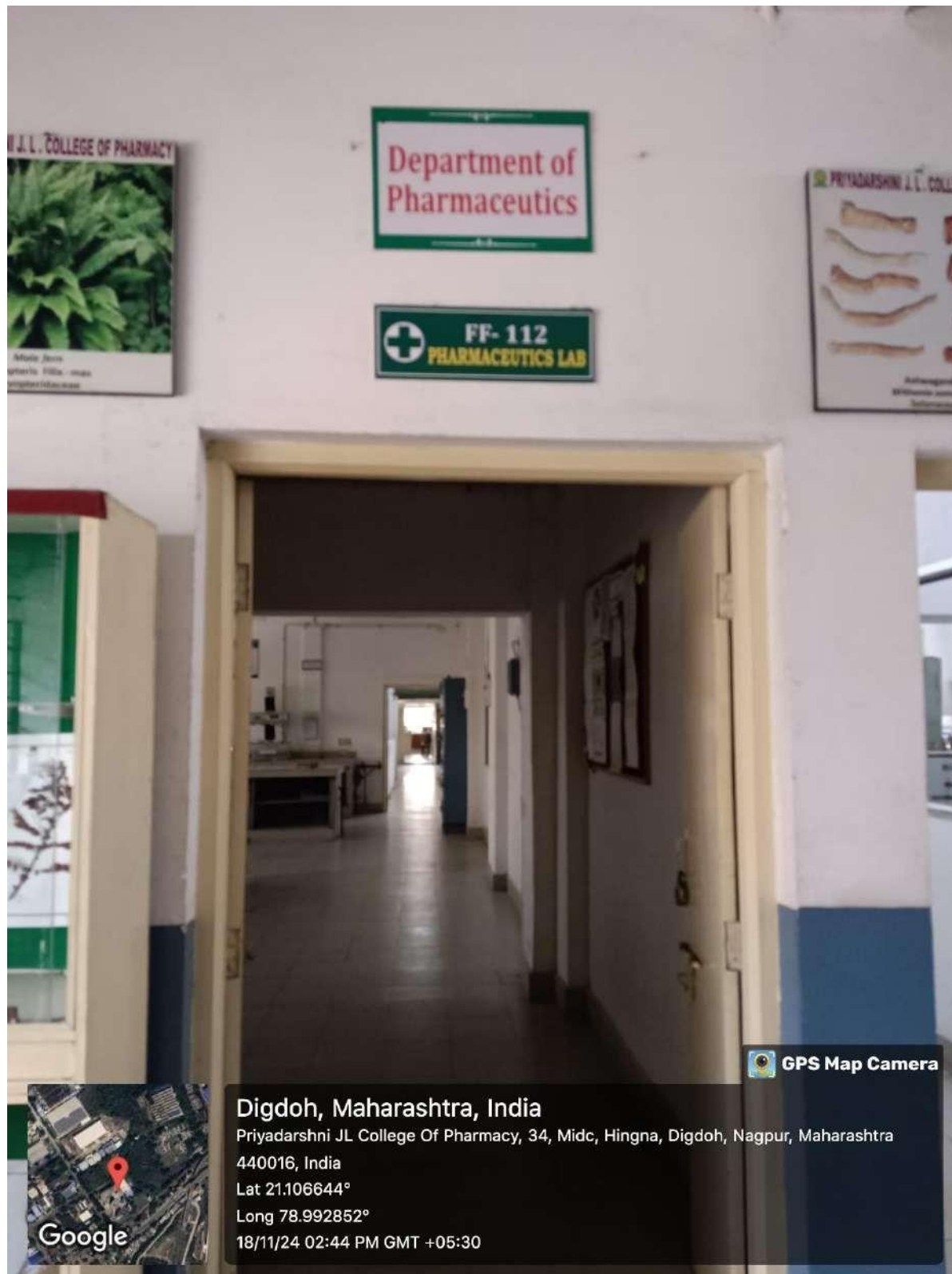
Accredited with Grade B++ by NAAC

Institute Code: DTE 4265 & RTMNU 265





## Pharmaceutics Labs:







LOKMANYA TILAK JANKALYAN SHIKSHAN SANSTHA'S  
**PRIYADARSHINI J. L. COLLEGE OF PHARMACY**

(Formerly known as J. L. Chaturvedi College of Pharmacy)

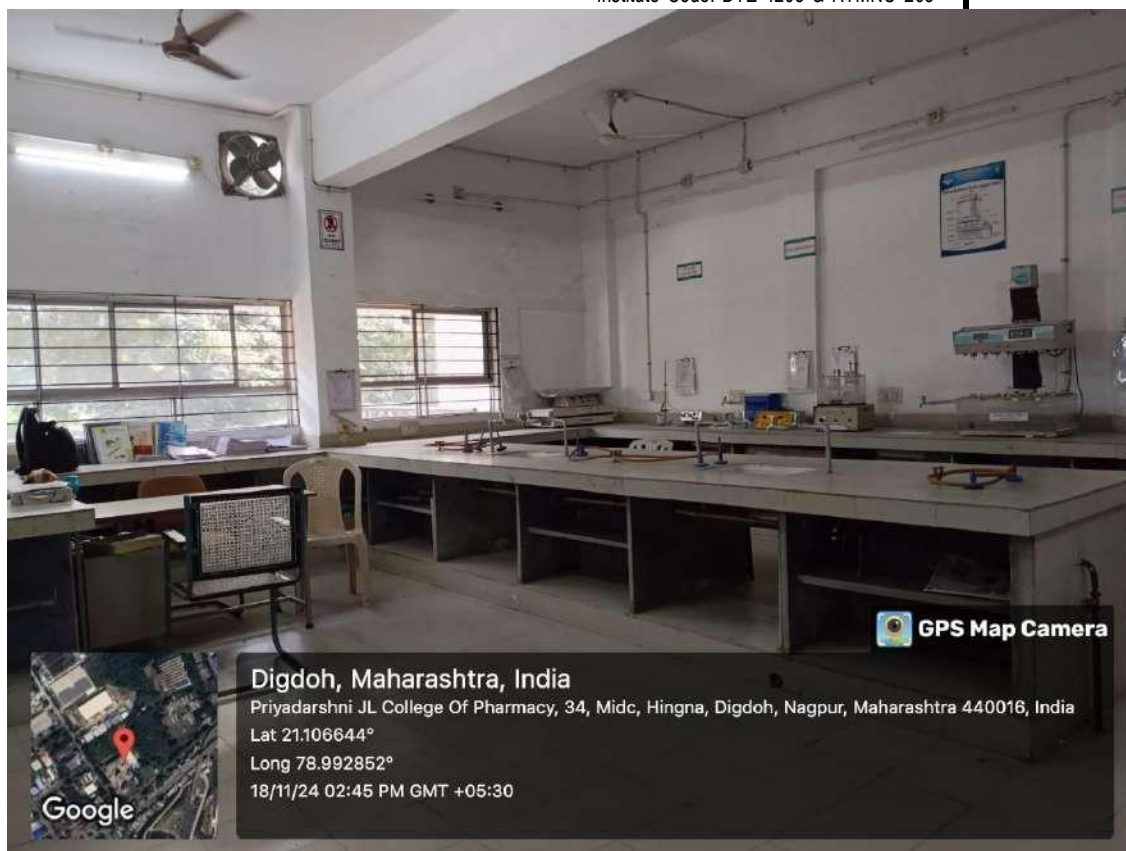
Electronics Zone Building, MIDC, Hingna Road, Nagpur-440016 (M.S.) India

Tel. No.: +91-7104 - 299510

E-mail: principal@pjlc.edu.in, ilccpnpg@gmail.com • Website: www. pjlc.edu.in

Accredited with Grade B++ by NAAC

Institute Code: DTE 4265 & RTMNU 265




**Digdoh, Maharashtra, India**

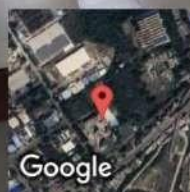
Priyadarshni JL College Of Pharmacy, 34, Midc, Hingna, Digdoh, Nagpur, Maharashtra 440016, India

Lat 21.106644°

Long 78.992852°

18/11/24 02:45 PM GMT +05:30

 **GPS Map Camera**



**Digdoh, Maharashtra, India**

Priyadarshni JL College Of Pharmacy, 34, Midc, Hingna, Digdoh, Nagpur, Maharashtra 440016, India

Lat 21.106644°

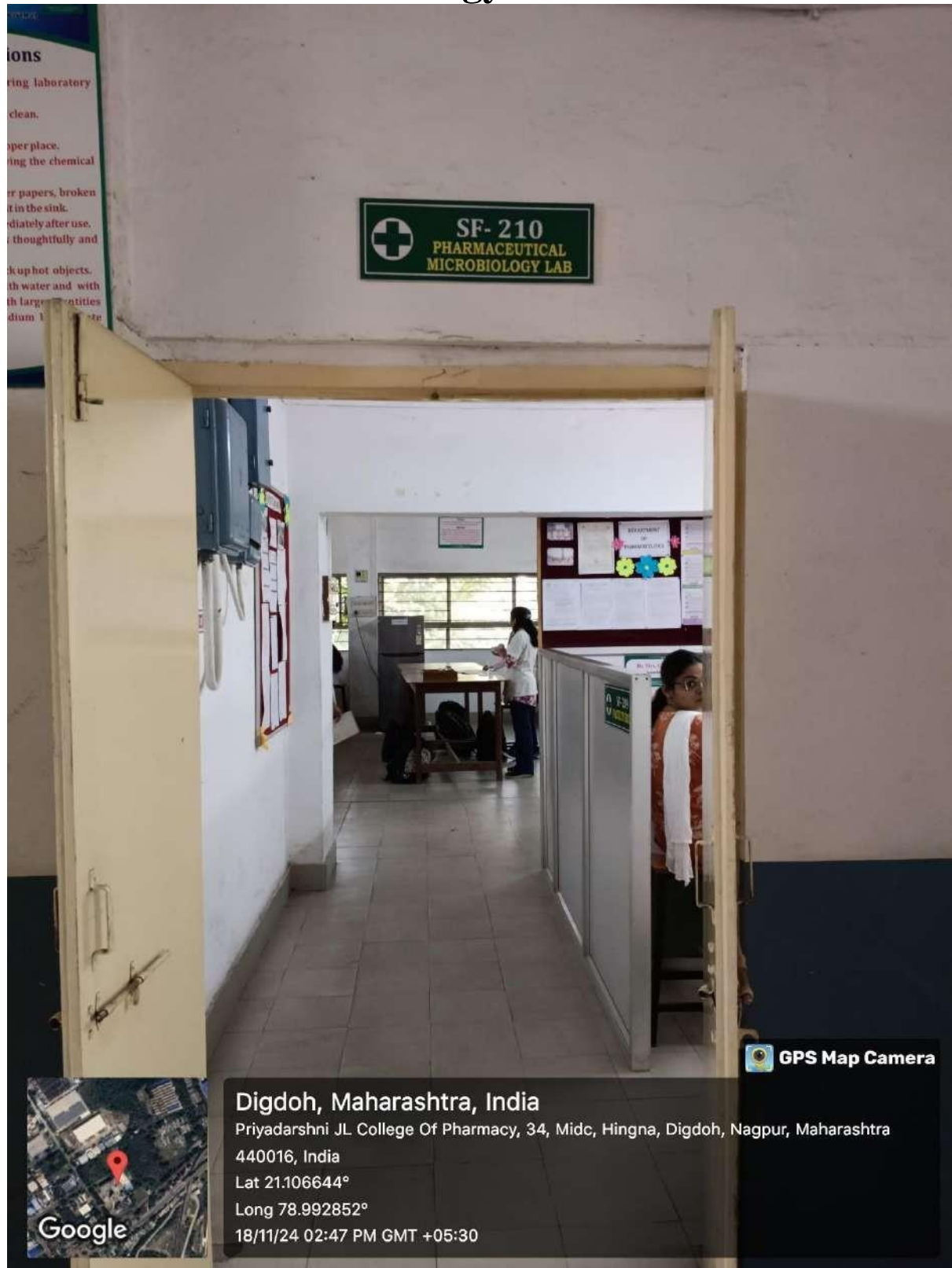
Long 78.992852°

18/11/24 02:47 PM GMT +05:30

 **GPS Map Camera**



## Pharmaceutical Microbiology Lab:





LOKMANYA TILAK JANKALYAN SHIKSHAN SANSTHA'S  
**PRIYADARSHINI J. L. COLLEGE OF PHARMACY**

(Formerly known as J. L. Chaturvedi College of Pharmacy)

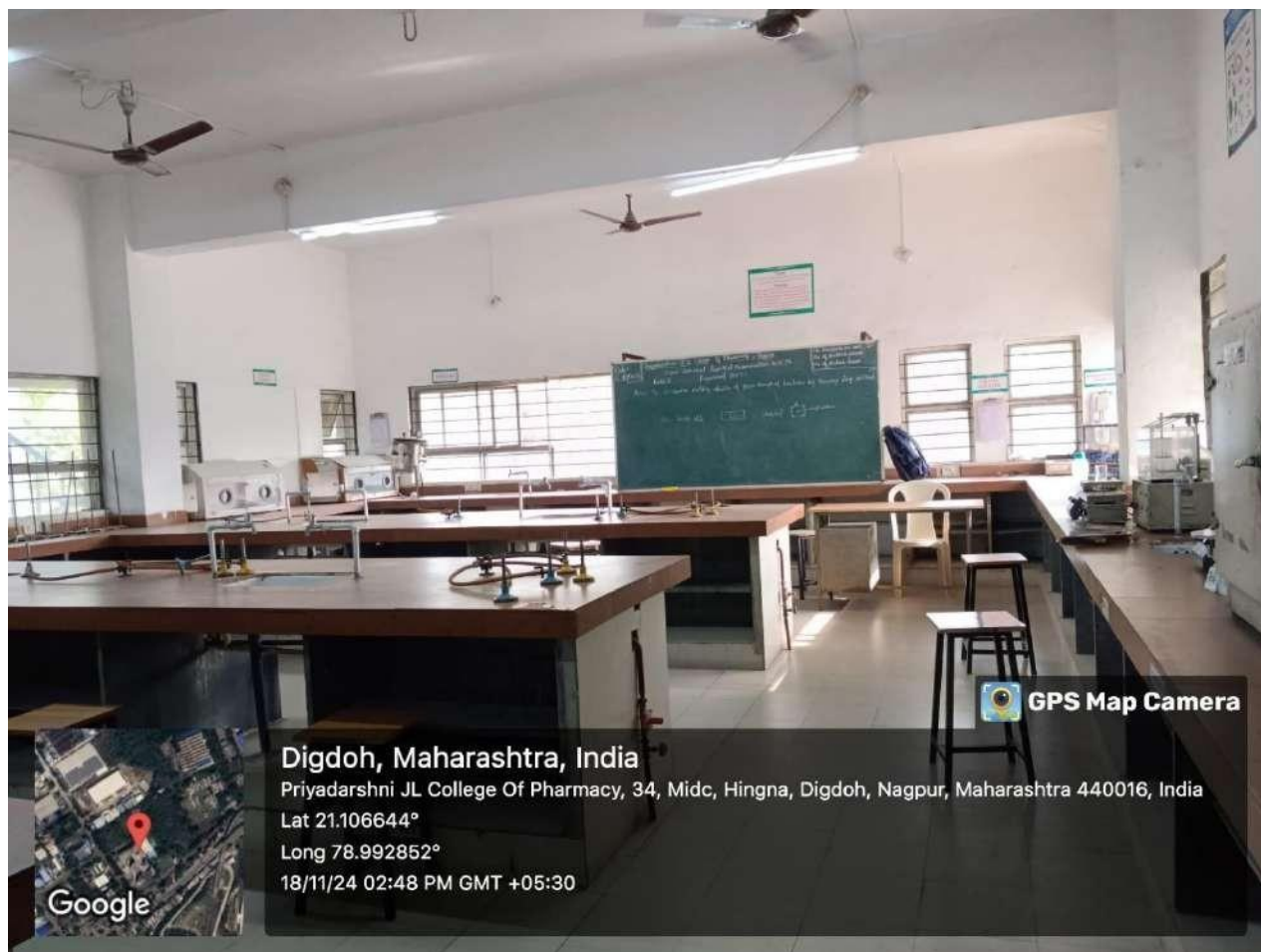
Electronics Zone Building, MIDC, Hingna Road, Nagpur-440016 (M.S.) India

Tel. No.: +91-7104 - 299510

E-mail: principal@pjlc.edu.in, ilccpnpg@gmail.com • Website: www. pjlc.edu.in

Accredited with Grade B++ by NAAC

Institute Code: DTE 4265 & RTMNU 265



Digdoh, Maharashtra, India

Priyadarshni JL College Of Pharmacy, 34, Midc, Hingna, Digdoh, Nagpur, Maharashtra 440016, India

Lat 21.106644°

Long 78.992852°

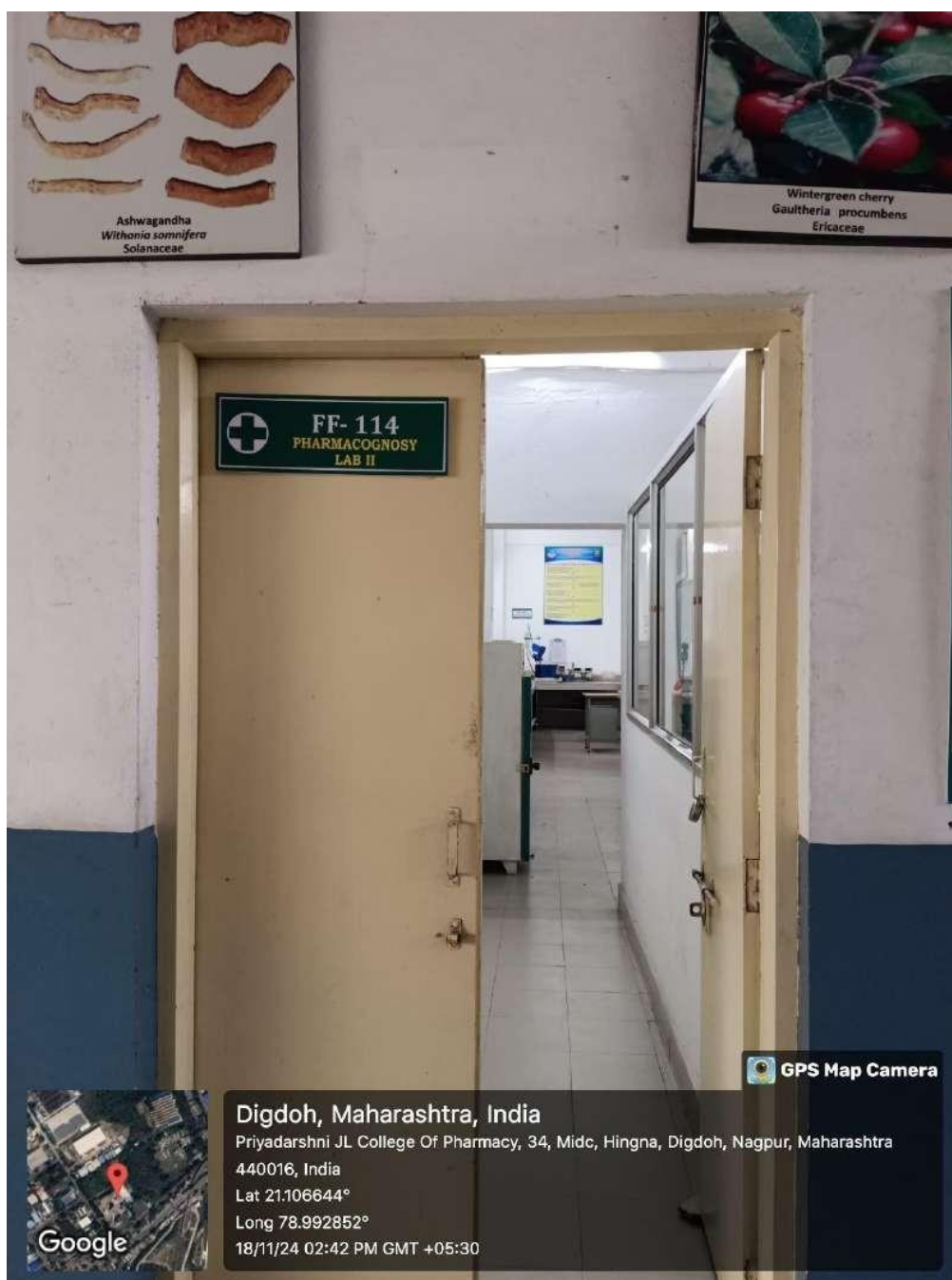
18/11/24 02:48 PM GMT +05:30

GPS Map Camera





## Pharmacognosy Labs:







LOKMANYA TILAK JANKALYAN SHIKSHAN SANSTHA'S  
**PRIYADARSHINI J. L. COLLEGE OF PHARMACY**

(Formerly known as J. L. Chaturvedi College of Pharmacy)

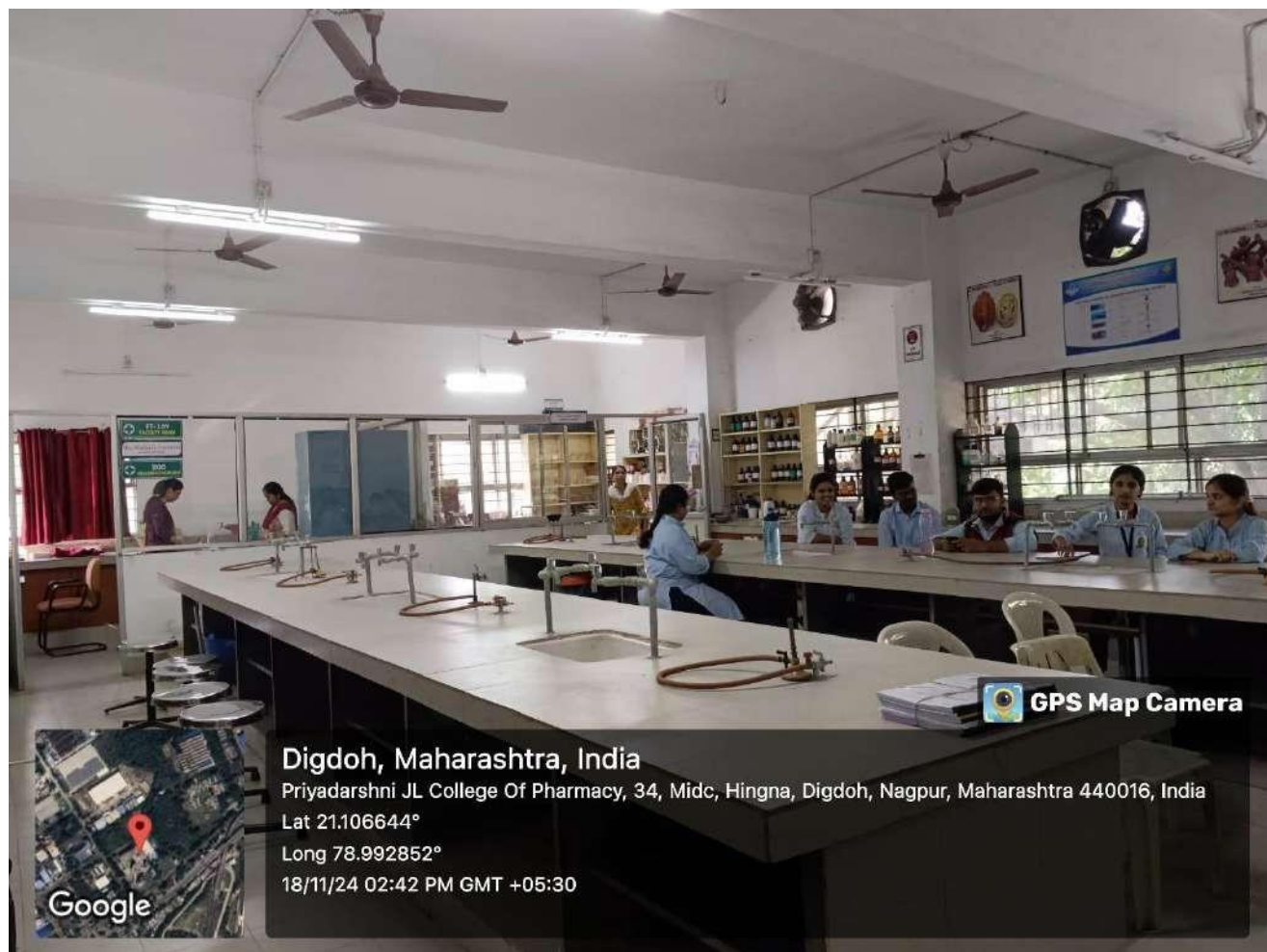
Electronics Zone Building, MIDC, Hingna Road, Nagpur-440016 (M.S.) India

Tel. No.: +91-7104 - 299510

E-mail: principal@pjlc.edu.in, ilccpnp@gmail.com • Website: www. pjlc.edu.in

Accredited with Grade B++ by NAAC

Institute Code: DTE 4265 & RTMNU 265



**Digdoh, Maharashtra, India**

Priyadarshni JL College Of Pharmacy, 34, Midc, Hingna, Digdoh, Nagpur, Maharashtra 440016, India

Lat 21.106644°

Long 78.992852°

18/11/24 02:42 PM GMT +05:30



**GPS Map Camera**



## Instrument Room:



Digdoh, Maharashtra, India

Priyadarshni JL College Of Pharmacy, 34, Midc, Hingna, Digdoh, Nagpur, Maharashtra  
440016, India

Lat 21.106644°

Long 78.992852°

18/11/24 03:02 PM GMT +05:30

Google



LOKMANYA TILAK JANKALYAN SHIKSHAN SANSTHA'S  
**PRIYADARSHINI J. L. COLLEGE OF PHARMACY**

(Formerly known as J. L. Chaturvedi College of Pharmacy)

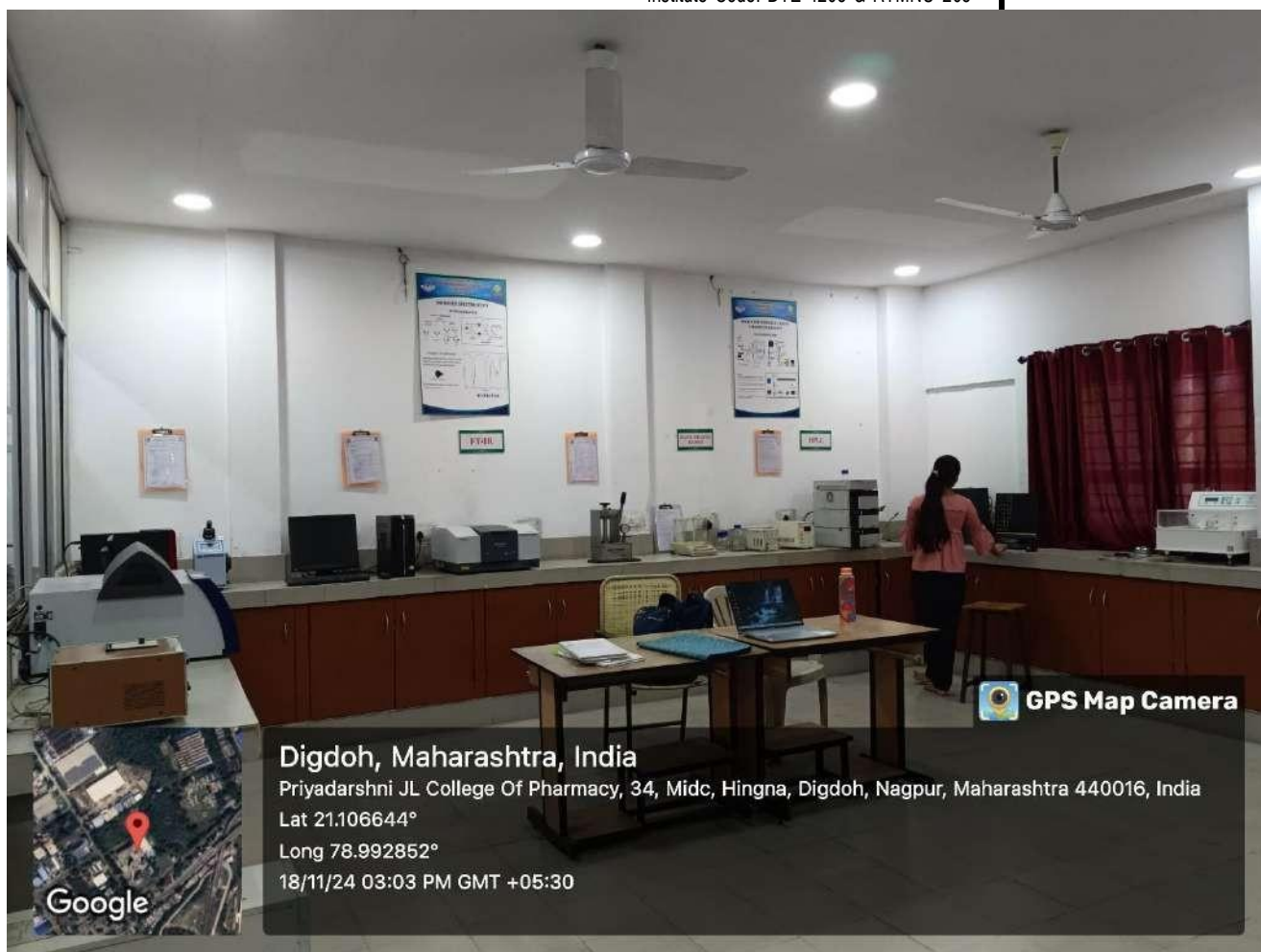
Electronics Zone Building, MIDC, Hingna Road, Nagpur-440016 (M.S.) India

Tel. No.: +91-7104 - 299510

E-mail: principal@pjlc.edu.in, ilccpnp@gmail.com • Website: www. pjlc.edu.in

Accredited with Grade B++ by NAAC

Institute Code: DTE 4265 & RTMNU 265



Digdoh, Maharashtra, India

Priyadarshni JL College Of Pharmacy, 34, Midc, Hingna, Digdoh, Nagpur, Maharashtra 440016, India

Lat 21.106644°

Long 78.992852°

18/11/24 03:03 PM GMT +05:30

GPS Map Camera





Unnamed Road, Hingna, Nildoh  
ct, Maharashtra 440016, India

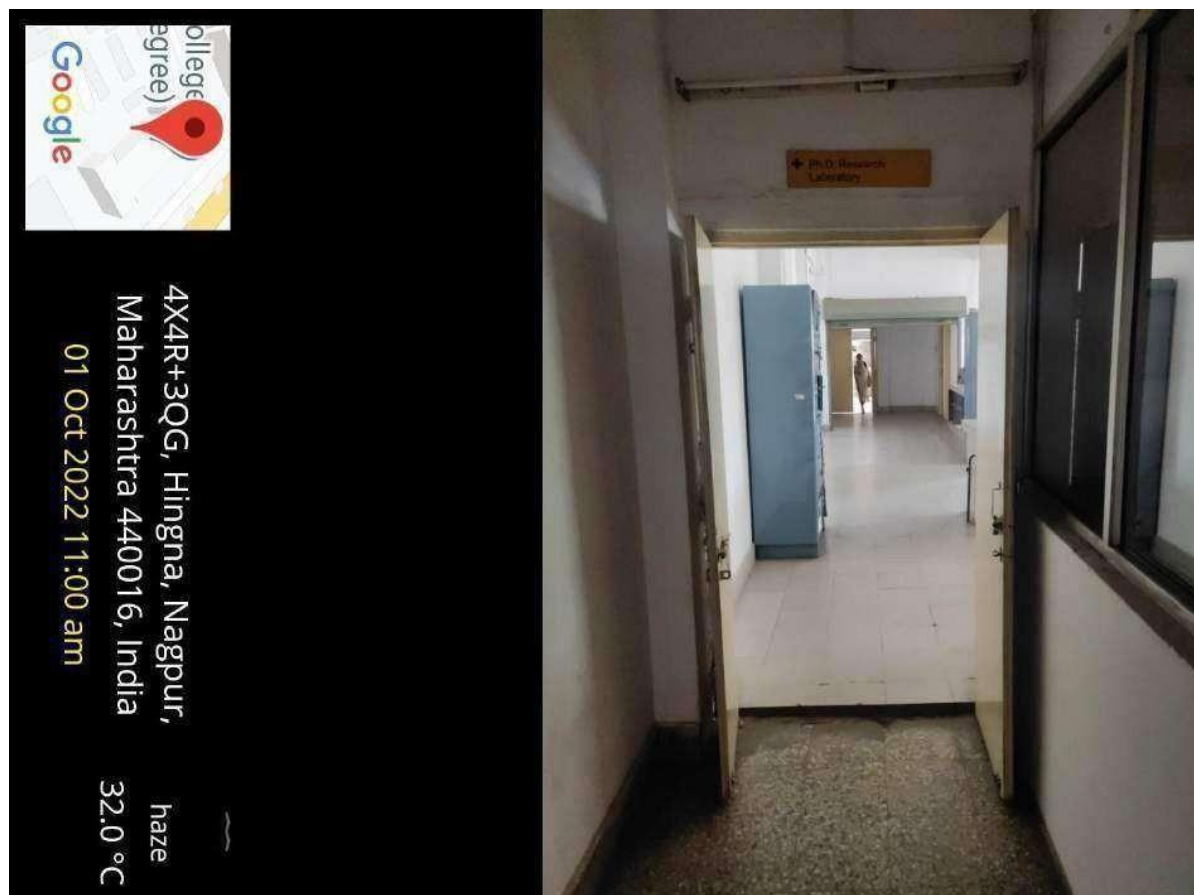
01 Oct 2022 11:31 am

haze  
32.0 °C





## Ph.D Research Lab:





LOKMANYA TILAK JANKALYAN SHIKSHAN SANSTHA'S  
**PRIYADARSHINI J. L. COLLEGE OF PHARMACY**

(Formerly known as J. L. Chaturvedi College of Pharmacy)

Electronics Zone Building, MIDC, Hingna Road, Nagpur-440016 (M.S.) India

Tel. No.: +91-7104 - 299510

E-mail: principal@pjlc.edu.in, ilccpnp@gmail.com • Website: www. pjlc.edu.in

Accredited with Grade B++ by NAAC

Institute Code: DTE 4265 & RTMNU 265



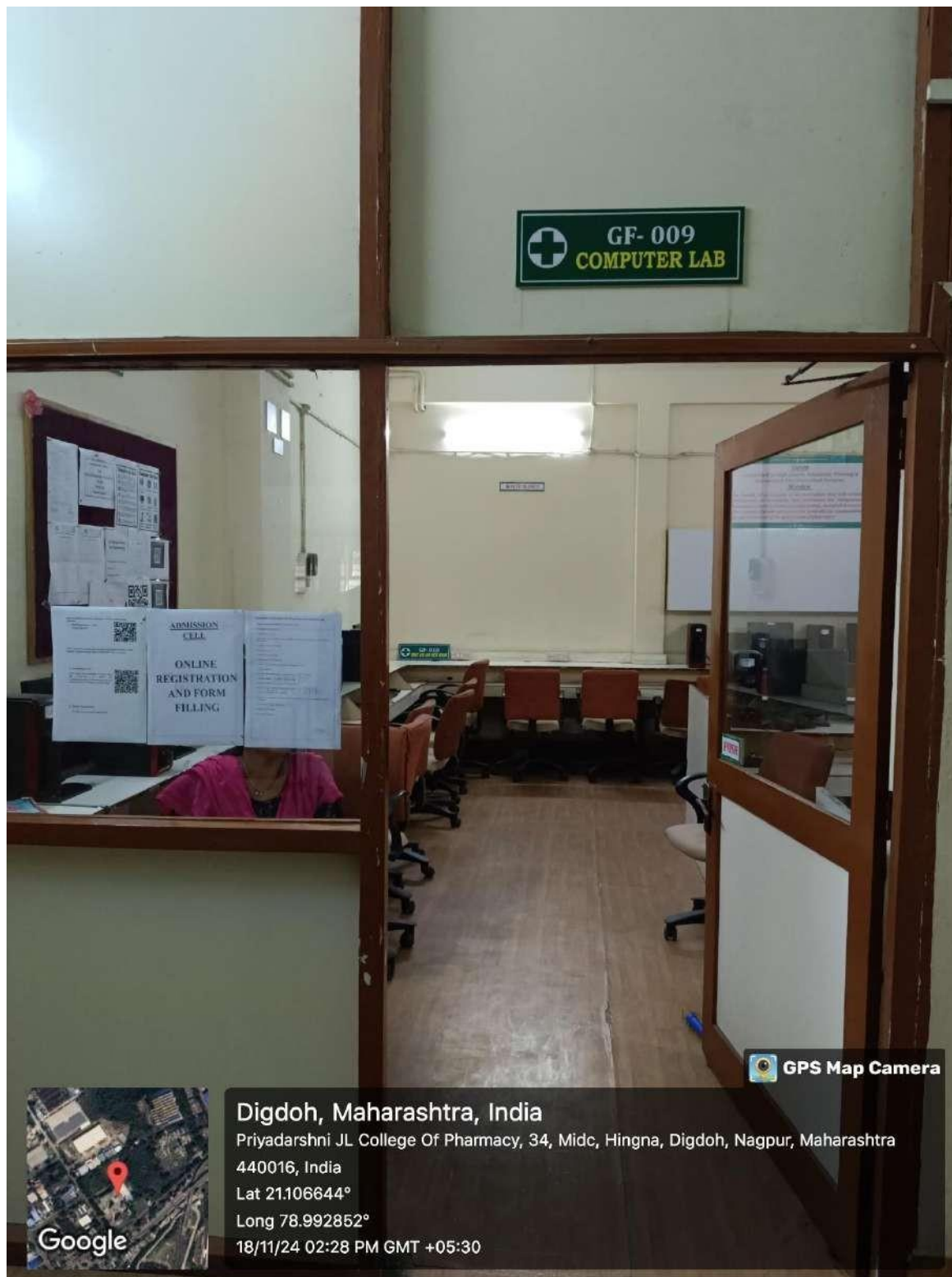
4X4R+3QG, Hingna, Nagpur,  
Maharashtra 440016, India

01 Oct 2022 11:00 am

haze  
32.0 °C



## Computer Lab







LOKMANYA TILAK JANKALYAN SHIKSHAN SANSTHA'S  
**PRIYADARSHINI J. L. COLLEGE OF PHARMACY**

(Formerly known as J. L. Chaturvedi College of Pharmacy)

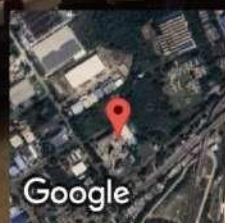
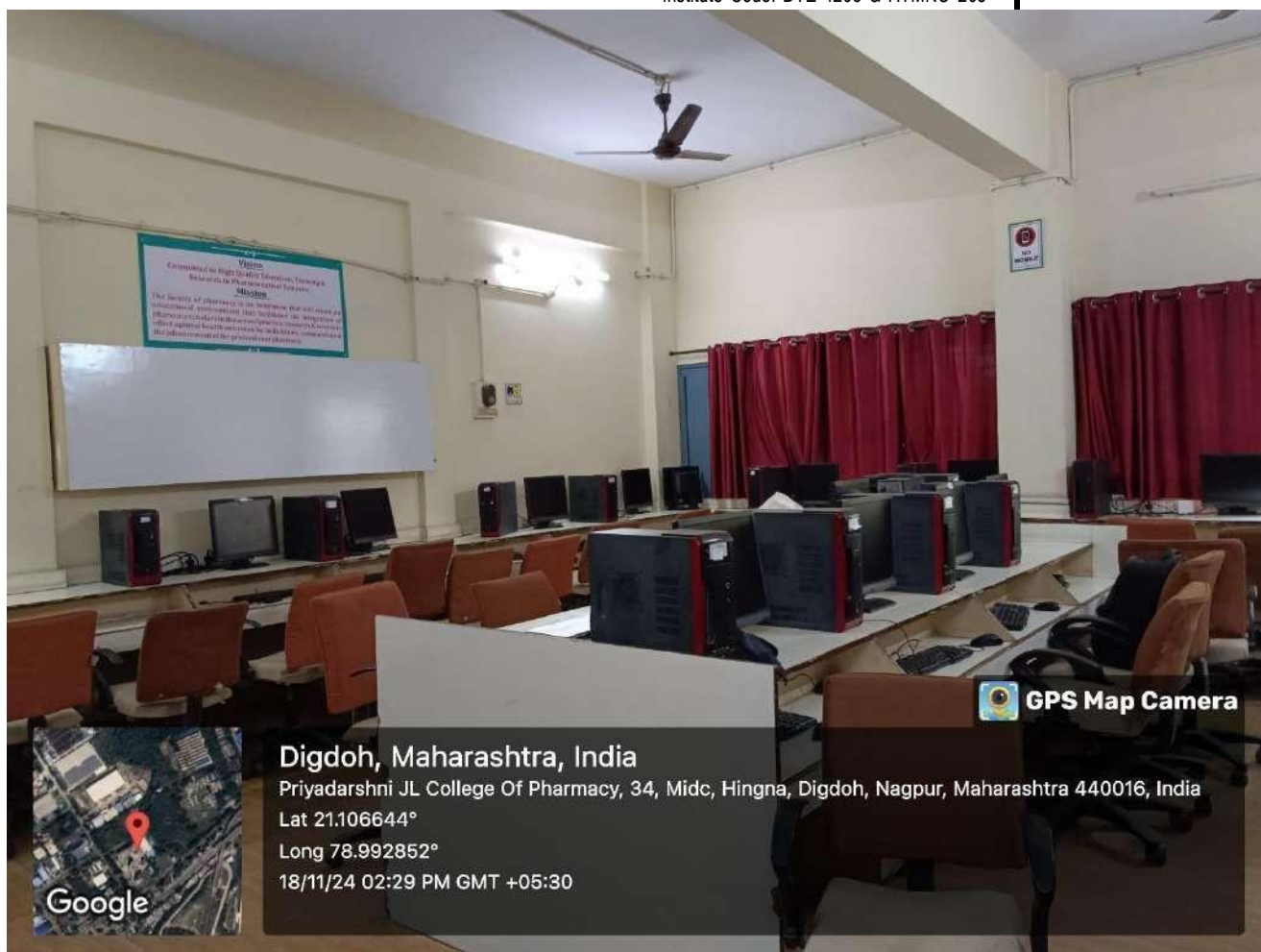
Electronics Zone Building, MIDC, Hingna Road, Nagpur-440016 (M.S.) India

Tel. No.: +91-7104 - 299510

E-mail: principal@pjlc.edu.in, ilccpnpg@gmail.com • Website: www. pjlc.edu.in

Accredited with Grade B++ by NAAC

Institute Code: DTE 4265 & RTMNU 265



**Digdoh, Maharashtra, India**

Priyadarshni JL College Of Pharmacy, 34, Midc, Hingna, Digdoh, Nagpur, Maharashtra 440016, India

Lat 21.106644°

Long 78.992852°

18/11/24 02:29 PM GMT +05:30



**GPS Map Camera**